



OVER 60?

Secure this property
for up to **59% less!**

Price

£215,000

Leasehold

2x  2x  1x 

**Manor Fields, Suffolk
Road, Maidstone, Kent
ME15**

Wards
Helping you move forwards



Main features

- **Spacious ground floor apartment overlooking fields**
- **Ideal for those downsizing or looking to get onto the property ladder**
- **No onward chain, allocated parking within a gated development**
- **Generous size rooms with bedroom 1 benefitting from en-suite facilities**
- **Conveniently located within close proximity to shops, amenities, Mote Park and a bus stop right outside**

Accommodation

GROUND FLOOR

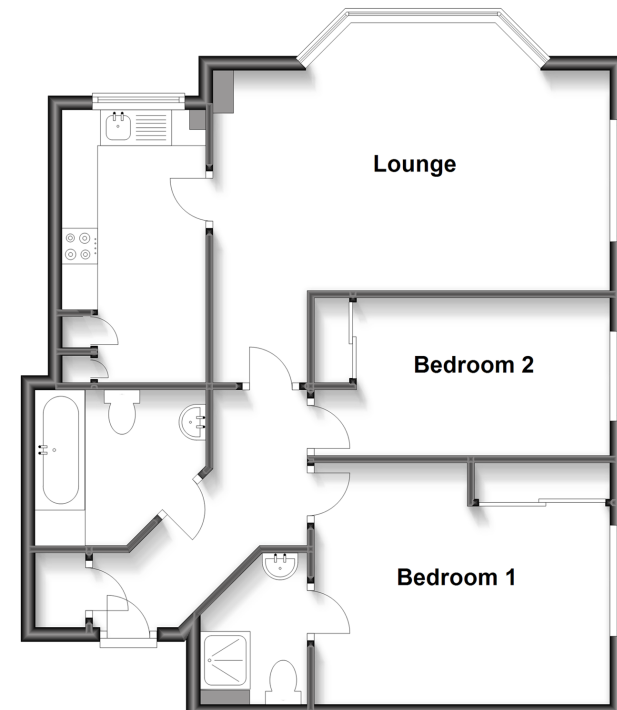
Hallway
 Kitchen: 12'0 x 6'0 (3.66m x 1.83m)
 Lounge: 18'0 x 18'0 (5.49m x 5.49m)
 Bedroom 1: 13'0 x 11'0 (3.97m x 3.36m)
 En-Suite Shower Room: 7'0 x 4'11 (2.14m x 1.50m)
 Bedroom 2: 13'0 x 7'0 (3.97m x 2.14m)
 Bathroom

OUTSIDE

Communal Grounds
 Allocated Parking

Ground Floor

Approx. 66.5 sq. metres (715.5 sq. feet)



Call Maidstone - 01622 683737 ■ wardsofkent.co.uk

- The seller is a person connected with Wards as defined in the Estate Agents Act 1979
- Appliances & services are untested, dimensions are approximate and floor plans are not to scale

- Legal advice should be taken to verify fixtures/fittings, planning, alterations and/or lease details
- Through a Homewise Home For Life Plan people aged 60+ can secure this property for up to 59% less, by purchasing a Lifetime Lease.