



**Price**  
**£300,000**

**Freehold**

3x  1x  1x 

**Charlton Street,  
Maidstone, Kent ME16**

**OVER 60?**

Secure this property  
for up to **59% less!**

*Wards*  
Helping you move forwards





## Main features

- **Spacious and versatile town house arranged over 3 floors**
- **Double glazing and central heating**
- **Off road parking for 2 plus garage**
- **First floor lounge with elevated views**
- **Ideal location for local amenities, town centre and riverside walks along the Medway**

## Accommodation

### GROUND FLOOR

Entrance Porch  
Hallway  
Kitchen: 14'4 x 7'4 (4.37m x 2.24m)

### FIRST FLOOR

Landing  
Lounge: 14'3 x 11'1 (4.35m x 3.38m)  
Bedroom 3: 8'4 x 7'5 (2.54m x 2.26m)  
Shower Room

### SECOND FLOOR

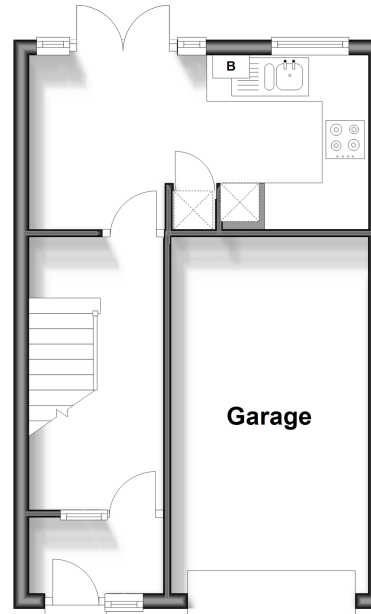
Landing  
Bedroom 1: 14'4 x 9'8 (4.37m x 2.95m)  
Bedroom 2: 13'2 x 8'8 (4.02m x 2.64m)

### OUTSIDE

Rear Garden  
Drive  
Garage

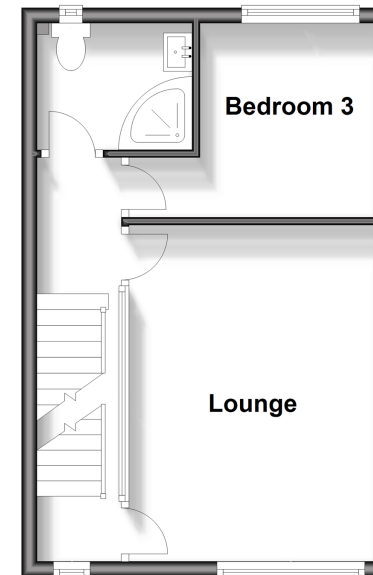
### Ground Floor

Approx. 30.9 sq. metres (332.5 sq. feet)



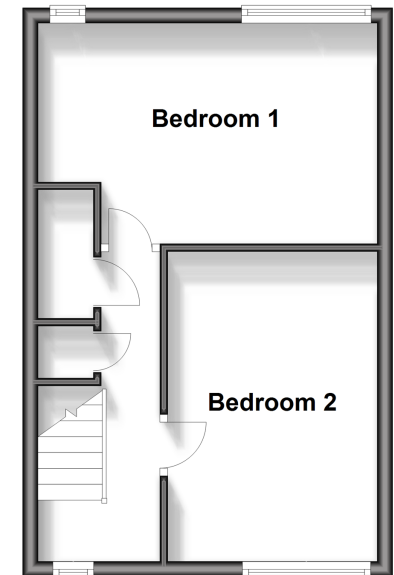
### First Floor

Approx. 31.6 sq. metres (340.5 sq. feet)



### Second Floor

Approx. 31.1 sq. metres (334.3 sq. feet)



**Call Maidstone - 01622 683737 ■ [wardsofkent.co.uk](http://wardsofkent.co.uk)**

■ Legal advice should be taken to verify fixtures/fittings, planning, alterations and/or lease details  
■ Through a Homewise Home For Life Plan people aged 60+ can secure this property for up to 59% less, by purchasing a Lifetime Lease.

■ Appliances & services are untested, dimensions are approximate and floor plans are not to scale



13158100/20240323/CV/DS