



**Price**  
**£585,000**

**Freehold**

2x  2x  1x 

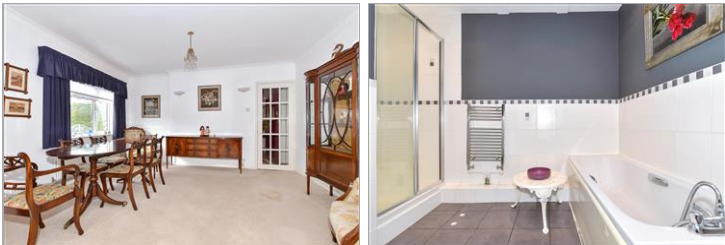
**Malling Road, Teston,  
Maidstone, Kent, ME18**

**OVER 60?**

Secure this property  
for up to **59% less!**

*Wards*  
Helping you move forwards





## Main features

- Impressive detached bungalow with no forward chain
- Spacious interior with a versatile layout, extended to the rear
- Private enclosed rear garden
- Village position providing a quiet, picturesque yet convenient location
- Teston offers easy access to local amenities, riverside walks.

## Accommodation

### GROUND FLOOR

Hallway

Entrance Porch

Bathroom: 9'3 x 7'2 (2.82m x 2.19m)

Kitchen: 10'1 x 10'0 (3.08m x 3.05m)

Lounge/Dining Area: 28'8 x 14'1 (8.74m x 4.30m)

Bedroom 1: 14'3 x 10'0 (4.35m x 3.05m)

En-Suite Shower Room: 4'8 x 4'2 (1.42m x 1.27m)

Bedroom 2: 13'0 x 10'0 (3.97m x 3.05m)

### OUTSIDE

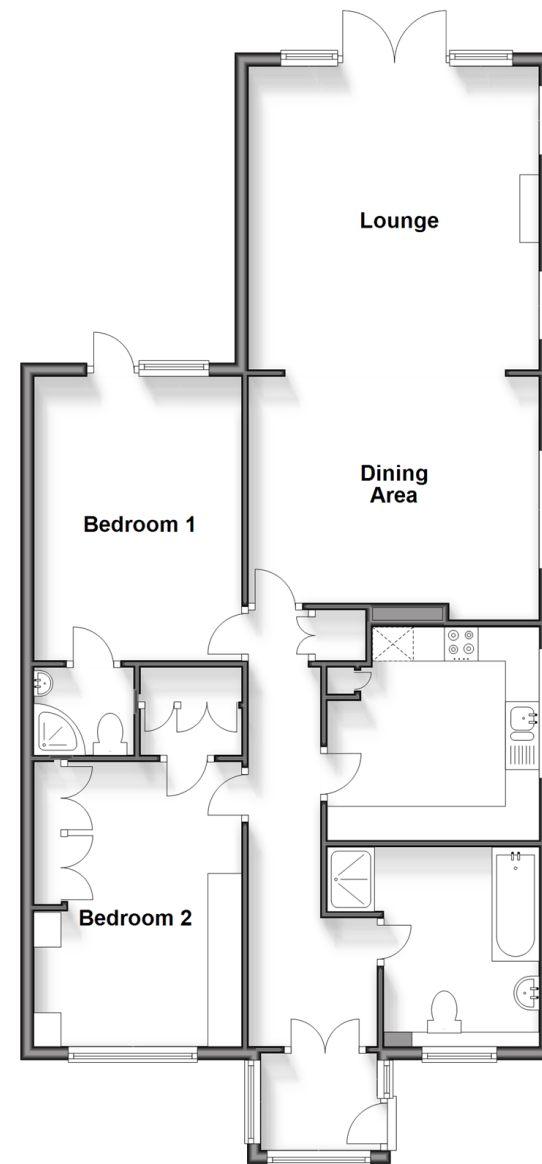
Rear Garden

Front Garden

Driveway

Garage

**Ground Floor**  
Approx. 95.1 sq. metres (1023.5 sq. feet)



**Call Maidstone - 01622 683737 ■ [wardsofkent.co.uk](http://wardsofkent.co.uk)**

- Legal advice should be taken to verify fixtures/fittings, planning, alterations and/or lease details
- Appliances & services are untested, dimensions are approximate and floor plans are not to scale
- Through a Homewise Home For Life Plan people aged 60+ can secure this property for up to 59% less, by purchasing a Lifetime Lease.



13158103/20240428/CV/MB