



Price
£300,000

Freehold

3x  1x  1x 

**Higham Close,
Maidstone, Kent ME15**

OVER 60?

Secure this property
for up to **59% less!**

Wards
Helping you move forwards



Main features

- Accessed via a private walkway
- Spacious lounge and separate dining room
- Garage en-bloc with additional parking to the side of the garage
- Ideal first time buy
- Close proximity to schools, town centre and amenities

Accommodation

GROUND FLOOR

Entrance Porch

Lounge: 14'0 x 14'0 (4.27m x 4.27m)

Dining Room: 10'4 x 7'6 (3.15m x 2.29m)

Kitchen: 10'6 x 7'0 (3.20m x 2.14m)

FIRST FLOOR

Landing

Bedroom 1: 10'8 x 7'8 (3.25m x 2.34m)

Bedroom 2: 11'9 x 8'5 (3.58m x 2.57m)

Bedroom 3: 9'1 x 6'3 (2.77m x 1.91m)

Bathroom

OUTSIDE

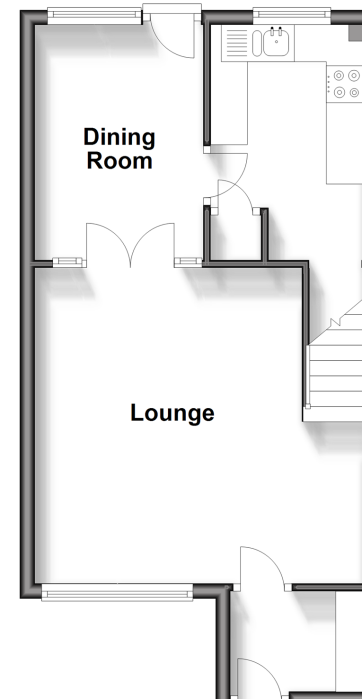
Rear Garden

Front Garden

Garage En-Bloc

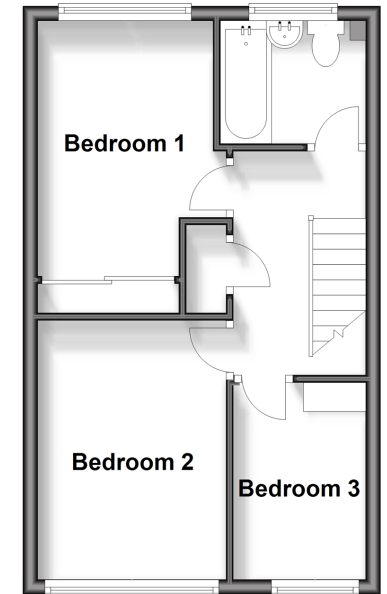
Ground Floor

Approx. 36.5 sq. metres (393.3 sq. feet)



First Floor

Approx. 33.8 sq. metres (363.6 sq. feet)



Call Maidstone - 01622 683737 ■ wardsofkent.co.uk

■ Legal advice should be taken to verify fixtures/fittings, planning, alterations and/or lease details
 ■ Through a Homewise Home For Life Plan people aged 60+ can secure this property for up to 59% less, by purchasing a Lifetime Lease.

■ Appliances & services are untested, dimensions are approximate and floor plans are not to scale



13158122/20240323/CV/LB01