



Price
£450,000

Freehold

3x  1x  2x 

**Palmar Road, Maidstone,
Kent ME16**

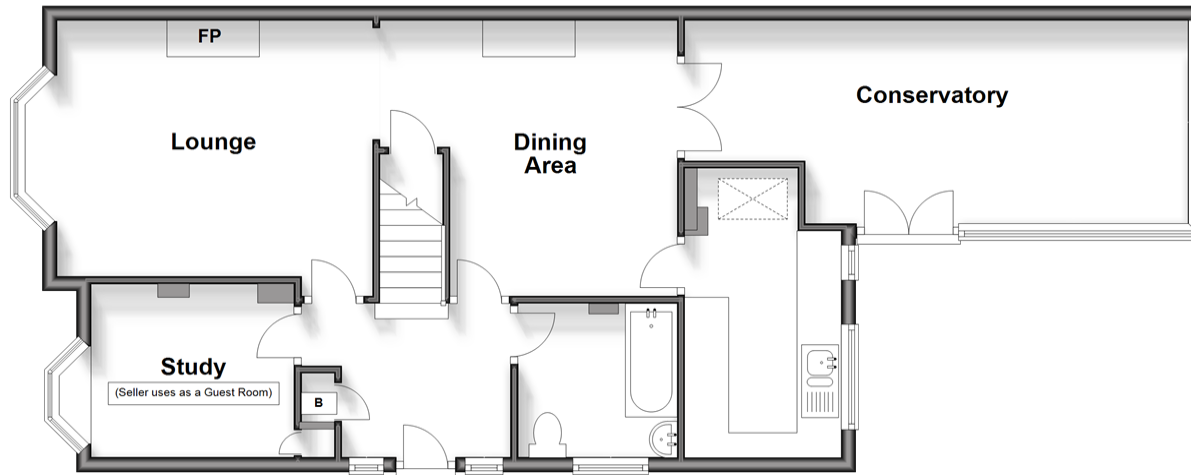
OVER 60?

Secure this property
for up to **59% less!**

Wards
Helping you move forwards

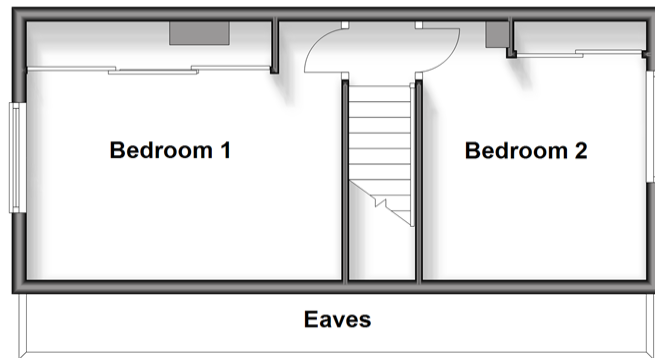
Ground Floor

Approx. 76.0 sq. metres (818.5 sq. feet)



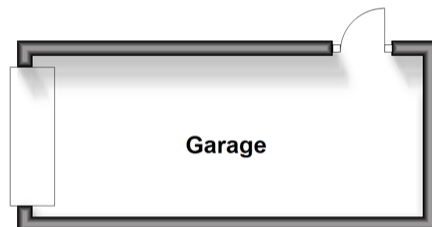
First Floor

Approx. 29.7 sq. metres (320.2 sq. feet)



Outbuilding

Approx. 11.7 sq. metres (126.0 sq. feet)



Accommodation

GROUND FLOOR

Hallway

Lounge: 14'0 x 11'7 (4.27m x 3.53m)

Dining Area: 12'5 x 10'4 (3.79m x 3.15m)

Kitchen: 13'1 x 7'1 (3.99m x 2.16m)

Conservatory: 23'1 x 8'3 (7.04m x 2.52m)

Study/Bedroom 3: 9'0 x 7'8 (2.75m x 2.34m)

Bathroom

FIRST FLOOR

Landing

Bedroom 1: 14'0 x 11'7 (4.27m x 3.53m)

Bedroom 2: 11'7 x 10'4 (3.53m x 3.15m)

OUTBUILDING

Garage

OUTSIDE

Rear Garden

Front Garden

Driveway



Main features

- Cox's built 1930's bay fronted house
- Set in the heart of Allington
- Large rear garden with overlooking summer room
- Ample off road parking and a single garage
- Easy access to shops, schools, local amenities and the town centre



Nearest Schools

Primary Schools: Brunswick House Primary 0.3 miles, Palace Wood Primary 0.4 miles, Allington Primary 0.5 miles



Transport Information

Train Stations: Maidstone Barracks 0.5 miles, Maidstone East 0.7 miles, Maidstone West 0.9 miles



Address

Palmar Road, Maidstone, Kent ME16



Directions

For directions to this property please contact us.



Wards
Helping you move forwards

Call Maidstone Branch 01622 683737 ■ wardsofkent.co.uk



■ Legal advice should be taken to verify fixtures/fittings, planning, alterations and/or lease details ■ Appliances & services are untested, dimensions are approximate and floor plans are not to scale
■ Through a Homewise Home For Life Plan people aged 60+ can secure this property for up to 59% less, by purchasing a Lifetime Lease.



13158131/20240323/CV/DS