



**Price**

**£235,000**

**Leasehold**

2x  1x  1x 

**Birchington Close,  
Maidstone, Kent ME14**

**OVER 60?**

Secure this property  
for up to **59% less!**

*Wards*  
Helping you move forwards





## Main features

- Attractive ground floor maisonette
- Very well presented
- Will have an updated lease on completion
- Popular location, ideal for access to amenities including shops, schools, station and motorways
- Garage en-bloc, no forward chain

## Accommodation

### GROUND FLOOR

Porch

Lounge/Diner: 17'9 x 10'7 (5.41m x 3.23m)

Kitchen: 9'9 x 7'7 (2.97m x 2.31m)

Bedroom 1: 13'5 x 9'7 (4.09m x 2.92m)

Bedroom 2: 10'5 x 9'9 (3.18m x 2.97m)

Shower Room: 6'9 x 6'8 (2.06m x 2.03m)

### OUTSIDE

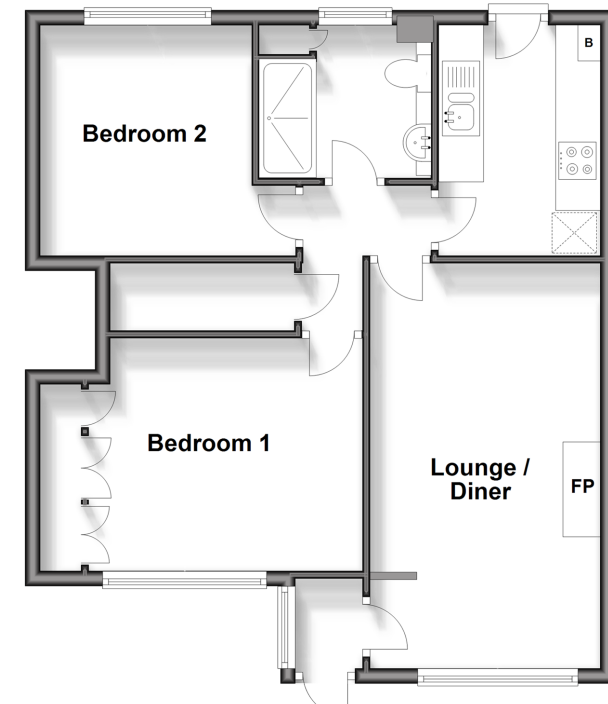
Rear Garden

Front Garden

Garage En-Bloc

### Ground Floor

Approx. 58.4 sq. metres (628.3 sq. feet)



**Call Maidstone - 01622 683737 ■ [wardsofkent.co.uk](http://wardsofkent.co.uk)**

■ Legal advice should be taken to verify fixtures/fittings, planning, alterations and/or lease details  
 ■ Through a Homewise Home For Life Plan people aged 60+ can secure this property for up to 59% less, by purchasing a Lifetime Lease.

■ Appliances & services are untested, dimensions are approximate and floor plans are not to scale