



Price
£325,000

Freehold

3x  1x  1x 

**The Head Race,
Maidstone, Kent ME15**

OVER 60?

Secure this property
for up to **59% less!**

Wards
Helping you move forwards



Main features

- Quiet and tranquil location
- Ample parking available via a garage
- Spacious lounge area and separate dining room
- Perfect corner plot position
- Convenient spot, ideal for amenities and walking distance to the town centre

Accommodation

GROUND FLOOR

Entrance Porch
Cloakroom
Lounge: 13'8 x 13'5 (4.17m x 4.09m)
Dining Room: 10'8 x 6'8 (3.25m x 2.03m)
Kitchen: 11'4 x 7'2 (3.46m x 2.19m)

FIRST FLOOR

Landing
Bedroom 1: 11'8 x 8'2 (3.56m x 2.49m)
Bedroom 2: 11'4 x 7'5 (3.46m x 2.26m)
Bedroom 3: 8'8 x 5'9 (2.64m x 1.75m)
Bathroom: (L-shaped) 7'8 x 7'6 (2.34m x 2.29m) plus 5'2 x 2'6 (1.58m x 0.76m)

OUTSIDE

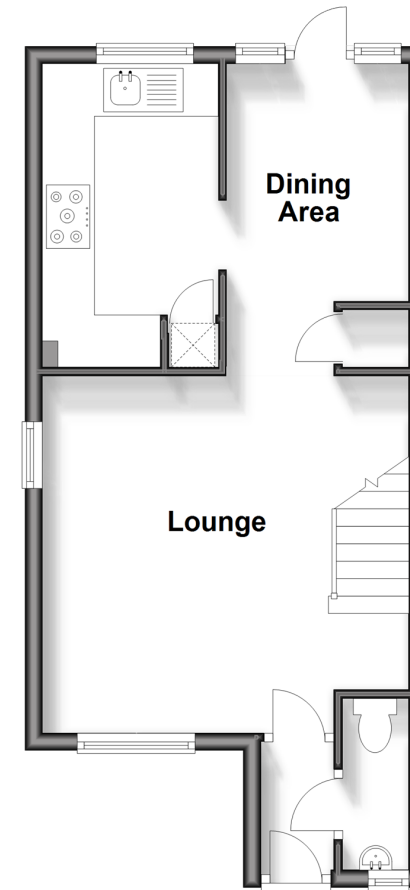
Rear Garden
Small Front Garden
Garage

Call Maidstone - 01622 683737 ■ wardsofkent.co.uk

- Legal advice should be taken to verify fixtures/fittings, planning, alterations and/or lease details
- Appliances & services are untested, dimensions are approximate and floor plans are not to scale
- Through a Homewise Home For Life Plan people aged 60+ can secure this property for up to 59% less, by purchasing a Lifetime Lease.

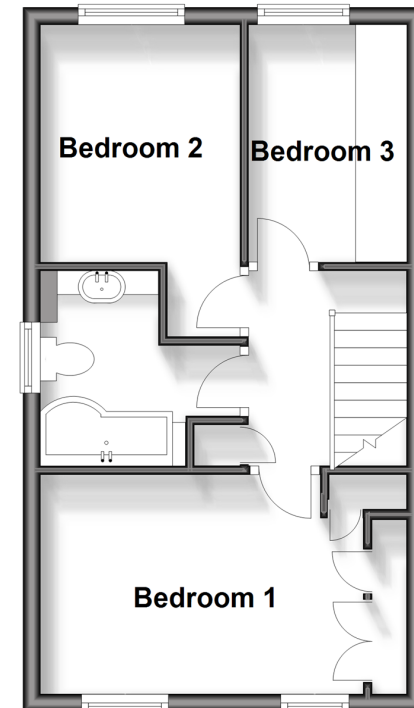
Ground Floor

Approx. 35.1 sq. metres (377.6 sq. feet)



First Floor

Approx. 32.4 sq. metres (348.9 sq. feet)



13158143/20240322/CV/LB01