



OVER 60?

Secure this property
for up to **59% less!**

Price

£239,995

Leasehold

2x  2x  1x 

**Guinevere Point,
Waterhouse Avenue,
Maidstone, Kent ME14**

Wards
Helping you move forwards



Main features

- 4th floor apartment with secure allocated parking
- Communal gardens and a roof terrace
- Modern and high specification interior
- Lift access , well maintained surrounding and amazing views
- Well positioned close to motorways and Maidstone East station

Accommodation

FOURTH FLOOR

Hallway

Lounge/Kitchen: 11'4 (3.46m) x 11'2 (3.41m) narrowing to 10'2 (3.10m)

Balcony

Bedroom 1: 15'4 x 6'5 (4.68m x 1.96m)

En-Suite Shower Room

Bedroom 2: 15'4 x 10'8 (4.68m x 3.25m)

Bathroom

OUTSIDE

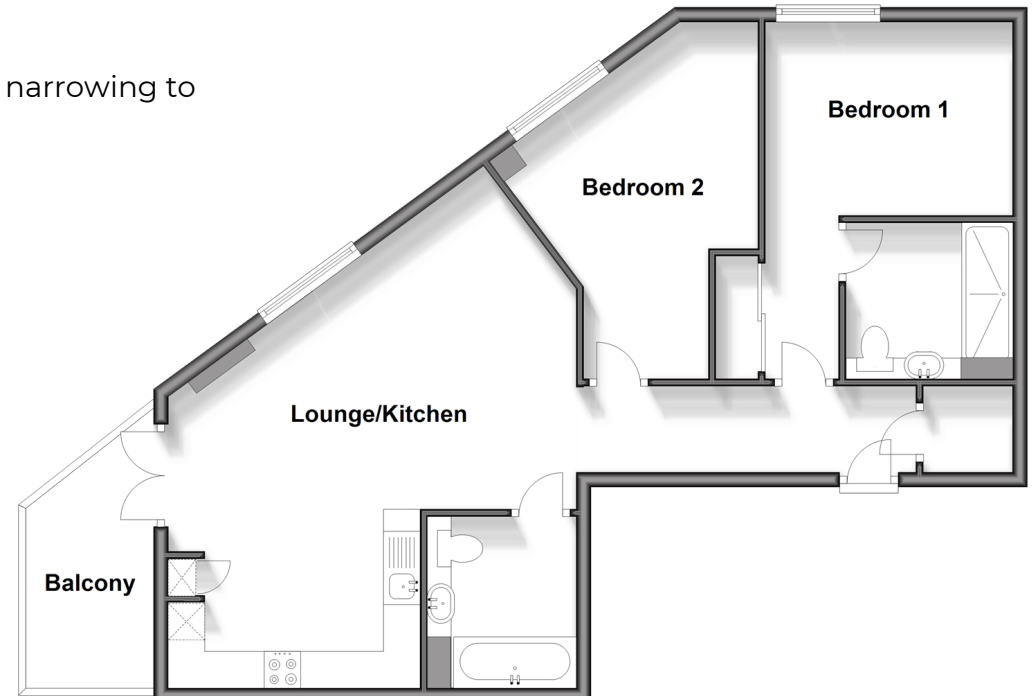
Allocated Parking

Residents Roof Terrace

Communal Gardens

Fourth Floor

Approx. 69.7 sq. metres (749.9 sq. feet)



Call Maidstone - 01622 683737 ■ wardsofkent.co.uk

■ Legal advice should be taken to verify fixtures/fittings, planning, alterations and/or lease details
 ■ Through a Homewise Home For Life Plan people aged 60+ can secure this property for up to 59% less, by purchasing a Lifetime Lease.

■ Appliances & services are untested, dimensions are approximate and floor plans are not to scale



13158153/20240504/SS1/LB01