



Price
£425,000

Freehold

3x  2x  1x 

**Gooch Close, Allington,
Maidstone, Kent ME16**

OVER 60?

Secure this property
for up to **59% less!**

Wards
Helping you move forwards



Main features

- Set in a quiet tranquil cul-de-sac
- Being sold chain free
- Located in the popular suburb of Allington
- Close to amenities, motorway links and Mid Kent Shopping Centre
- En-suite facilities to bedroom 1

Accommodation

GROUND FLOOR

Porch
Cloakroom
Lounge: 14'3 x 10'9 (4.35m x 3.28m)
Dining Area: 10'6 x 7'2 (3.20m x 2.19m)
Kitchen: 13'8 x 6'5 (4.17m x 1.96m)
Conservatory: 14'1 x 9'7 (4.30m x 2.92m)

FIRST FLOOR

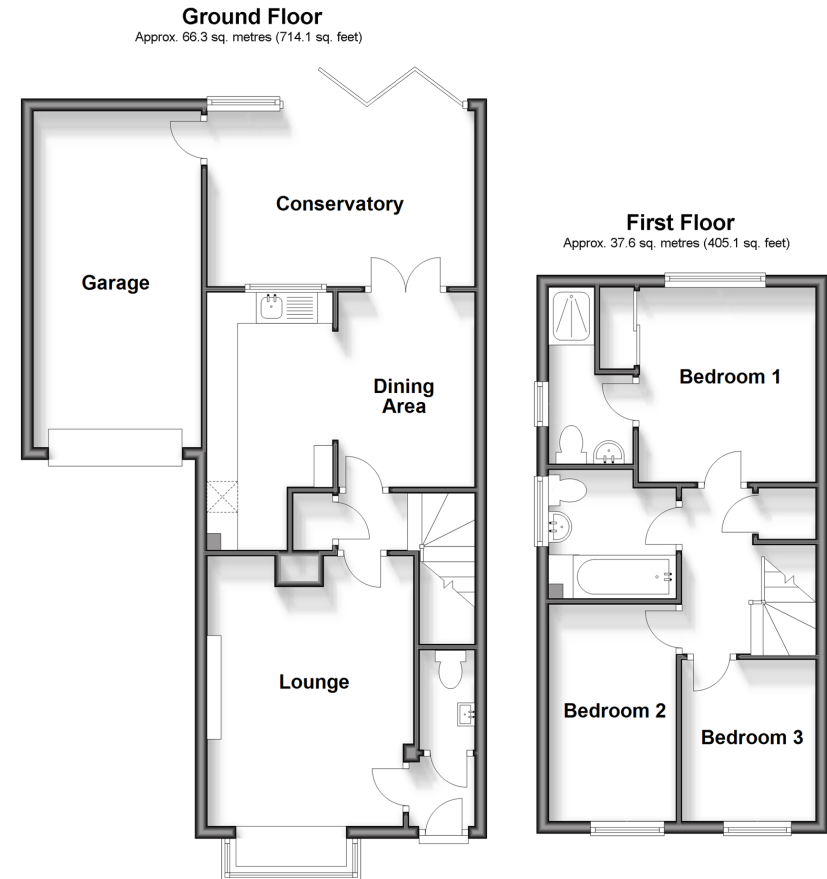
Landing
Bedroom 1: 10'2 x 9'4 (3.10m x 2.85m)
En-Suite Shower Room
Bedroom 2: 11'7 x 6'8 (3.53m x 2.03m)
Bedroom 3: 9'2 x 7'3 (2.80m x 2.21m)
Bathroom: 7'0 x 6'7 (2.14m x 2.01m)

OUTSIDE

Rear Garden
Driveway
Garage

Call Maidstone - 01622 683737 ■ wardsofkent.co.uk

- Legal advice should be taken to verify fixtures/fittings, planning, alterations and/or lease details
- Appliances & services are untested, dimensions are approximate and floor plans are not to scale
- Through a Homewise Home For Life Plan people aged 60+ can secure this property for up to 59% less, by purchasing a Lifetime Lease.



13158188/20240511/CV/LB01