



OVER 60?

Secure this property
for up to **59% less!**

Price

£225,000

Leasehold

2x  1x  1x 

**Lindisfarne Gardens,
Maidstone, Kent ME16**

Wards
Helping you move forwards



Main features

- Impressive second floor flat with no onward chain
- Garage and additional parking available
- Well presented with a modern stylish interior
- Storage in main loft and garage loft
- Convenient location for the town centre

Accommodation

SECOND FLOOR

Hallway

Kitchen: 10'6 x 6'2 (3.20m x 1.88m)

Lounge/Dining Room: 15'3 x 14'6 (4.65m x 4.42m)

Bedroom 1: 12'4 x 8'7 (3.76m x 2.62m)

En-Suite Shower Room

Bedroom 2: 11'9 x 7'3 (3.58m x 2.21m)

Bathroom: 6'2 x 6'0 (1.88m x 1.83m)

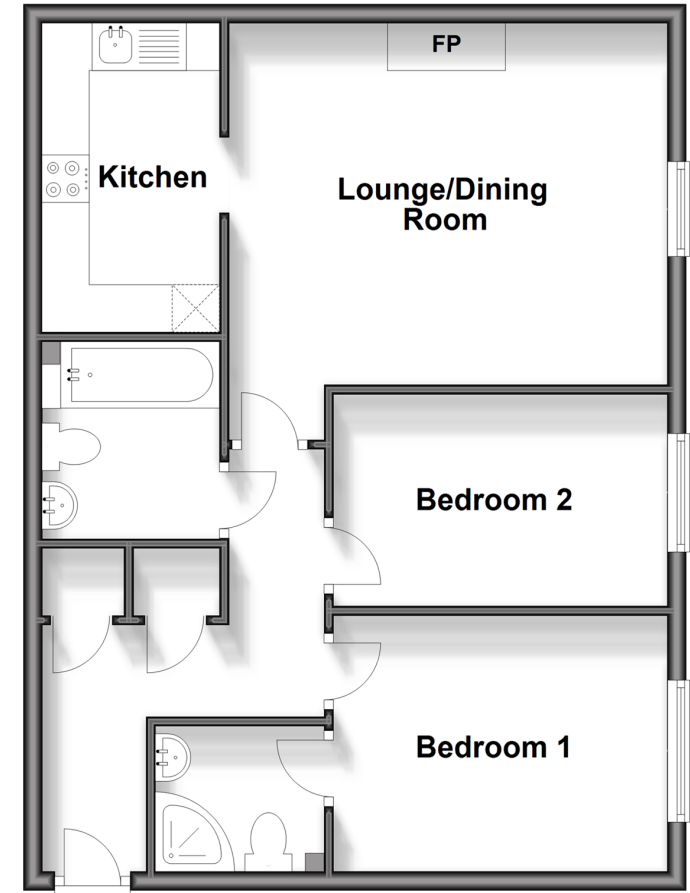
OUTSIDE

Communal Areas

Garage

Second Floor

Approx. 59.3 sq. metres (638.4 sq. feet)



Call Maidstone - 01622 683737 ■ wardsofkent.co.uk

- Legal advice should be taken to verify fixtures/fittings, planning, alterations and/or lease details
- Appliances & services are untested, dimensions are approximate and floor plans are not to scale
- Through a Homewise Home For Life Plan people aged 60+ can secure this property for up to 59% less, by purchasing a Lifetime Lease.

