



Price

£900,000

Freehold

4x  1x  1x 

**Wrotham Road,
Meopham, Kent, DA13**

Wards
Helping you move forwards



Main features

- Incredible plot of 0.8656 acres, split across 2 title deeds
- Superb development opportunity (subject to consents)
- Close to Meopham Secondary School
- Versatile accommodation with bedrooms to both floors
- Ideal for car fanatics with ample off road parking

Accommodation

GROUND FLOOR

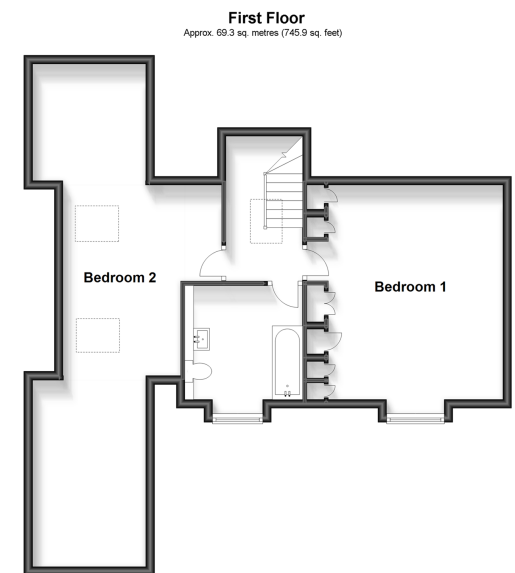
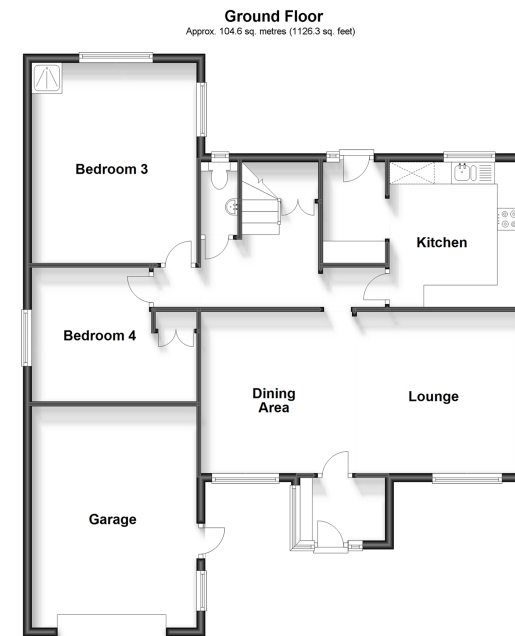
Porch
 Lounge: 12'6 x 12'0 (3.81m x 3.66m)
 Dining Area: 12'1 x 12'0 (3.69m x 3.66m)
 Kitchen: 11'0 x 10'0 (3.36m x 3.05m)
 Utility Room: 7'9 x 4'8 (2.36m x 1.42m)
 Inner Hallway
 Cloakroom: 5'7 x 2'8 (1.70m x 0.81m)
 Bedroom 3: 15'1 x 11'11 (4.60m x 3.63m)
 Bedroom 4: (L-shaped) 9'11 x 8'6 (3.02m x 2.59m) plus 4'10 x 3'8 (1.47m x 1.12m)

FIRST FLOOR

Landing
 Bedroom 1: 16'5 x 15'1 (5.01m x 4.60m)
 Bedroom 2: 11'6 x 10'11 (3.51m x 3.33m) plus 14'9 x 8'8 (4.50m x 2.64m)
 Bathroom: 8'10 x 8'5 (2.69m x 2.57m)

OUTSIDE

Garage
 Driveway
 Front Garden
 Large Rear Garden



Call Meopham - 01474 813100 ■ wardsofken.co.uk

- Legal advice should be taken to verify fixtures/fittings, planning, alterations and/or lease details
- Appliances & services are untested, dimensions are approximate and floor plans are not to scale