



OVER 60?

Secure this property
for up to **59% less!**

Price

£725,000

Freehold

4x  2x  2x 

**The Russets, Meopham,
Kent, DA13**

Wards
Helping you move forwards



Main features

- Good size office, ideal for working from home or a sitting room
- Beautiful open plan kitchen/diner presented in excellent condition
- Picturesque countryside views and incredible size rear garden
- Ample space to park with garage and large driveway
- Short walk to Meopham Station

Accommodation

GROUND FLOOR

Hallway

Office: 16'0 x 7'11 (4.88m x 2.41m)

Lounge: 13'10 x 13'4 (4.22m x 4.07m) plus 7'6 x 2'5 (2.29m x 0.74m)

Kitchen/Diner: 19'5 x 10'9 (5.92m x 3.28m)

Utility Room: (L-shaped) 7'10 x 6'0 (2.39m x 1.83m) plus 4'9 x 3'1 (1.45m x 0.94m)

Cloakroom: 4'7 x 4'5 (1.40m x 1.35m)

FIRST FLOOR

Landing

Bedroom 1: (L-shaped) 13'5 x 9'4 (4.09m x 2.85m) plus 3'9 x 3'7 (1.14m x 1.09m)

Ensuite Shower Room: (L-shaped) 4'11 x 4'5 (1.50m x 1.35m) plus 2'11 x 2'4 (0.89m x 0.71m)

Bedroom 2: 13'4 x 7'10 (4.07m x 2.39m)

Bedroom 3: (L-shaped) 9'8 x 8'0 (2.95m x 2.44m) plus 3'7 x 2'10 (1.09m x 0.86m)

Bedroom 4: 9'0 x 7'4 (2.75m x 2.24m)

Bathroom: 9'5 x 7'3 (2.87m x 2.21m)

OUTSIDE

Garage

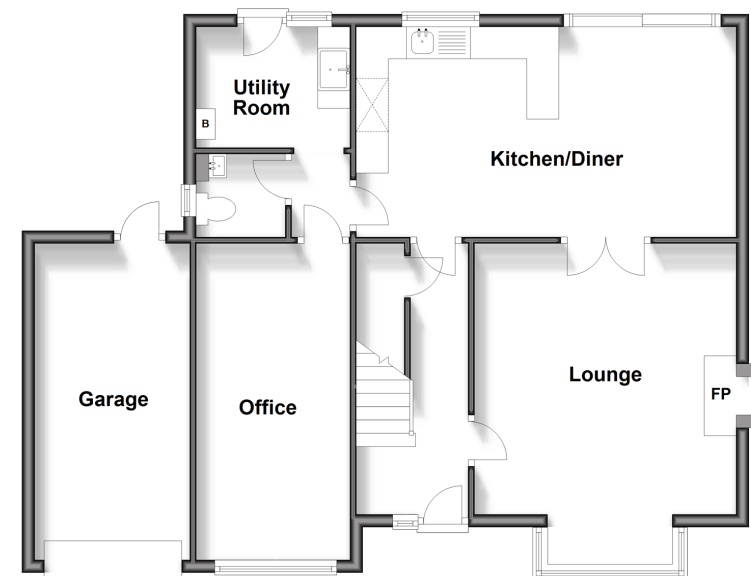
Driveway

Front Garden

Large Rear Garden

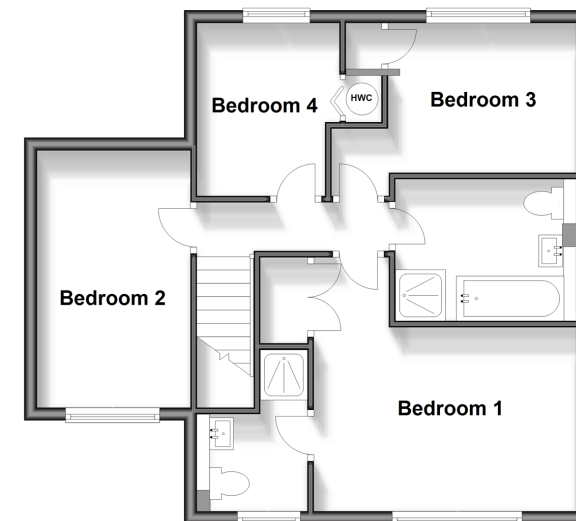
Ground Floor

Approx. 79.1 sq. metres (851.5 sq. feet)



First Floor

Approx. 55.2 sq. metres (594.1 sq. feet)



Call Meopham - 01474 813100 ■ wardsof Kent.co.uk

- Legal advice should be taken to verify fixtures/fittings, planning, alterations and/or lease details
- Appliances & services are untested, dimensions are approximate and floor plans are not to scale
- Through a Homewise Home For Life Plan people aged 60+ can secure this property for up to 59% less, by purchasing a Lifetime Lease.



13319918/20231229/SB/DF