



**OVER 60?**

Secure this property  
for up to **59% less!**

**Price**

**£350,000**

**Freehold**

2x  1x  1x 

**Forge Cottages,  
Maidstone Road,  
Wrotham Heath, Kent,  
TN15**

**Wards**  
Helping you move forwards





## Main features

- Impressive décor throughout
- Off road parking to rear
- Short drive to Borough Green Station with links to London Victoria and London Bridge
- Walking distance to Wrotham Heath Golf Club
- Spacious rear garden with gated access and storage shed

## Accommodation

### GROUND FLOOR

Lounge: 11'11 x 10'10 (3.63m x 3.30m)

Dining Area: 11'10 x 8'8 (3.61m x 2.64m)

Kitchen: 10'6 x 7'0 (3.20m x 2.14m)

Rear Lobby

Bathroom: 7'1 x 5'7 (2.16m x 1.70m)

### FIRST FLOOR

Landing

Bedroom 1: 11'0 x 10'5 (3.36m x 3.18m)

Bedroom 2: 9'0 x 9'0 (2.75m x 2.75m)

### OUTSIDE

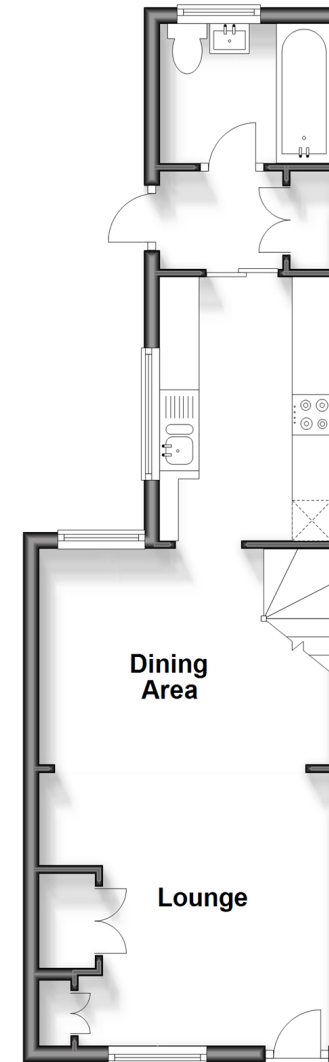
Front Garden

Rear Garden

Off Road Parking

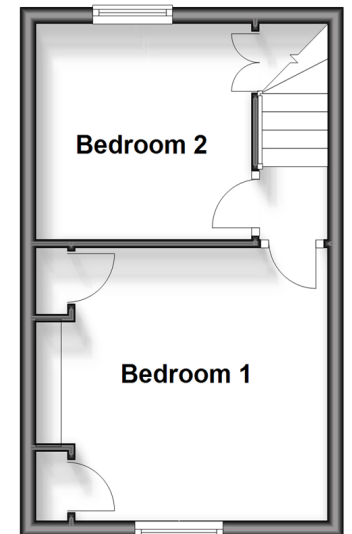
### Ground Floor

Approx. 36.9 sq. metres (397.4 sq. feet)



### First Floor

Approx. 22.8 sq. metres (245.2 sq. feet)



**Call Meopham - 01474 813100 ■ [wardsof Kent.co.uk](http://wardsof Kent.co.uk)**

- Legal advice should be taken to verify fixtures/fittings, planning, alterations and/or lease details
- Appliances & services are untested, dimensions are approximate and floor plans are not to scale
- Through a Homewise Home For Life Plan people aged 60+ can secure this property for up to 59% less, by purchasing a Lifetime Lease.



13322409/20240124/SB/DF