



OVER 60?

Secure this property
for up to **59% less!**

Price
£385,000

Freehold

3x  1x  1x 

**Station Road, Meopham,
Kent, DA13**

Wards
Helping you move forwards



Main features

- Incredible extensions transforming size of the home
- Trendy décor throughout with impeccable finishes
- Close walk to Meopham Station
- Entertainment paradise with open plan layout to ground floor
- Manageable rear garden with built in seating area

Accommodation

GROUND FLOOR

Lounge: 21'7 x 10'10 (6.58m x 3.30m)

Kitchen/Dining Area: (L-shaped) 9'11 x 7'5 (3.02m x 2.26m) plus 9'3 x 9'0 (2.82m x 2.75m)

Cloakroom: 5'0 x 2'8 (1.53m x 0.81m)

SPLIT LEVEL FIRST FLOOR

Landing

Bedroom 1: 10'10 x 10'2 (3.30m x 3.10m)

Bedroom 3: 8'9 x 6'11 (2.67m x 2.11m)

Bathroom: 7'11 x 5'5 (2.41m x 1.65m)

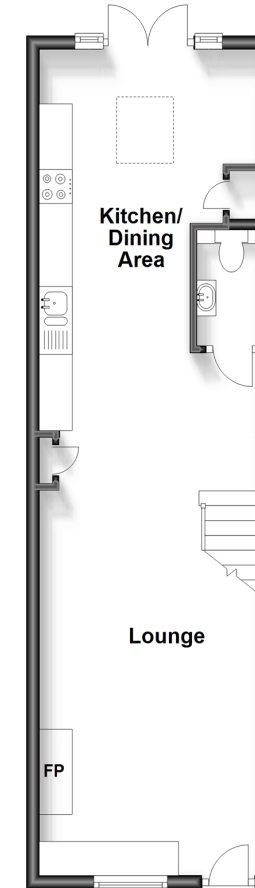
SECOND FLOOR

Bedroom 2: 11'2 x 10'2 (3.41m x 3.10m)

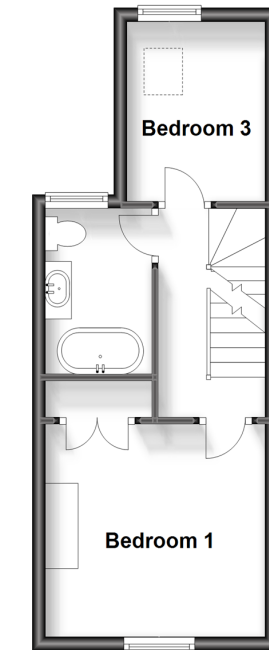
OUTSIDE

Courtyard Garden

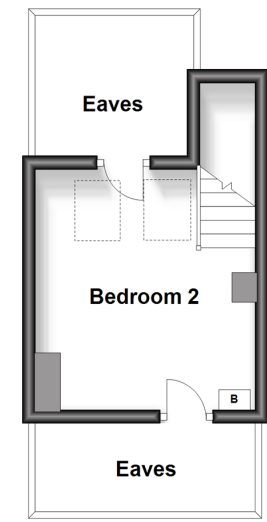
Ground Floor
Approx. 40.6 sq. metres (437.4 sq. feet)



Split Level First Floor
Approx. 26.9 sq. metres (289.3 sq. feet)



Second Floor
Approx. 12.9 sq. metres (138.8 sq. feet)



Call Meopham - 01474 813100 ■ wardsof Kent.co.uk

- Legal advice should be taken to verify fixtures/fittings, planning, alterations and/or lease details
- Appliances & services are untested, dimensions are approximate and floor plans are not to scale
- Through a Homewise Home For Life Plan people aged 60+ can secure this property for up to 59% less, by purchasing a Lifetime Lease.



13324373/20240214/SB/DF