



Price
£480,000

Freehold

4x  2x  1x 

**Edmund Close,
Meopham, Kent, DA13**

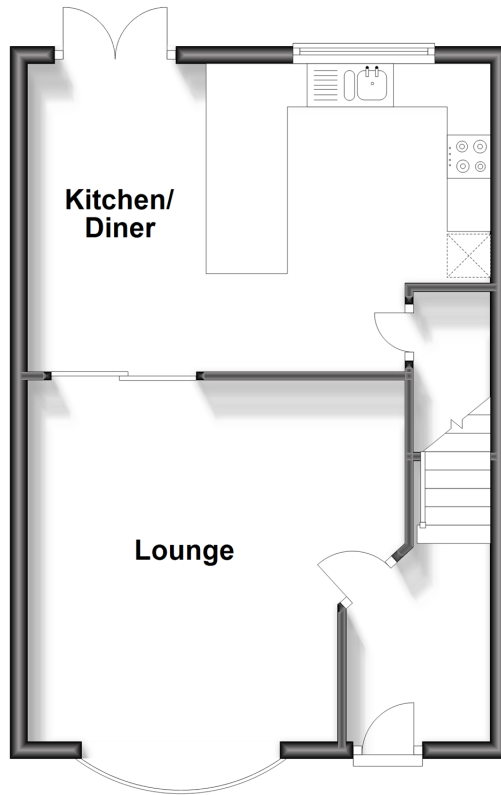
OVER 60?

Secure this property
for up to **59% less!**

Wards
Helping you move forwards

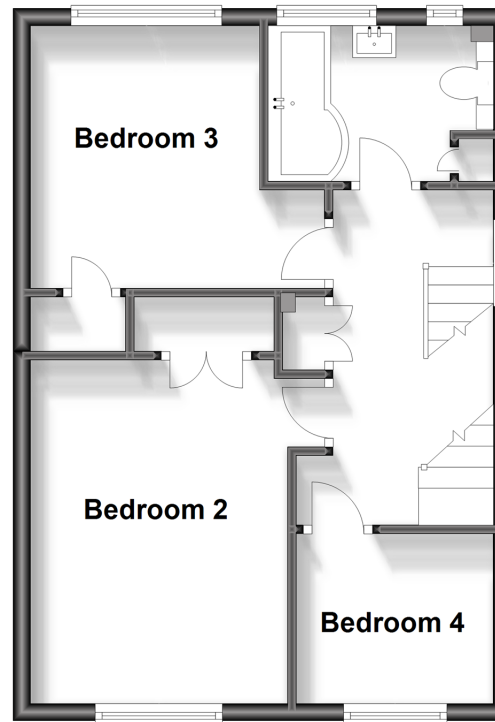
Ground Floor

Approx. 42.2 sq. metres (454.2 sq. feet)



First Floor

Approx. 41.9 sq. metres (450.8 sq. feet)



Second Floor

Approx. 24.9 sq. metres (268.1 sq. feet)



Accommodation

GROUND FLOOR

Entrance Hall: 8'0 x 5'5 (2.44m x 1.65m)
Lounge: 14'10 x 14'3 (4.52m x 4.35m)
Kitchen/Diner: 17'7 x 11'8 (5.36m x 3.56m)

FIRST FLOOR

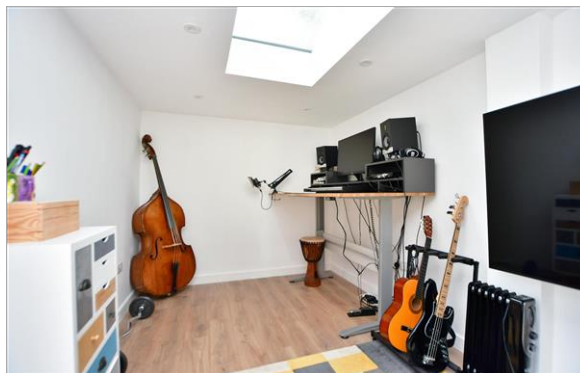
Landing
Bedroom 2: 13'6 x 11'2 (4.12m x 3.41m)
Bedroom 3: 11'1 x 11'0 (3.38m x 3.36m)
Bedroom 4: 7'5 x 6'6 (2.26m x 1.98m)
Bathroom: 8'10 x 5'9 (2.69m x 1.75m)

SECOND FLOOR

Landing
Bedroom 1: 15'3 x 13'8 (4.65m x 4.17m)
Ensuite Shower Room: 5'1 x 4'2 (1.55m x 1.27m)

OUTSIDE

Driveway
Front Garden
Rear Garden
Outbuilding/Office: 15'9 x 8'2 (4.80m x 2.49m)



Main features

- Enclosed private garden with sunny aspect
- Converted garage, ideal for a home office
- Within walking distance to Meopham Station and local amenities
- Peaceful and safe cul-de-sac location
- Highly recommended primary and secondary schools close by



Nearest Schools

Primary: Meopham Community Primary 0.7 miles, Istead Rise Primary 1.3 miles, Langafel C of E Voluntary Controlled Primary 1.8 miles
Secondary: Mayfield Grammar 4.5 miles, Gravesend Grammar 5.9 miles, Meopham School 1.1 miles



Transport Information

Train Stations: Meopham 0.1 miles, Sole Street 0.8 miles, Longfield 2.6 miles



Address

Edmund Close, Meopham, Kent, DA13



Directions

For directions to this property please contact us.



Wards
Helping you move forwards

Call Meopham Branch 01474 813100 ■ wardsofkent.co.uk



- Legal advice should be taken to verify fixtures/fittings, planning, alterations and/or lease details
- Appliances & services are untested, dimensions are approximate and floor plans are not to scale
- Through a Homewise Home For Life Plan people aged 60+ can secure this property for up to 59% less, by purchasing a Lifetime Lease.



13324701/20231013/SB/KD