



Price
£450,000

Freehold

3x  2x  3x 

**Whitepost Lane,
Culverstone, Kent, DA13**

OVER 60?

Secure this property
for up to **59% less!**

Wards
Helping you move forwards



Main features

- Superb size rear garden with access to double garage and parking
- Leafy countryside setting with exciting renovation potential
- Character features including Rayburn ideal for cooking & heating
- Downstairs office, ideal for homeworking
- Good size front garden

Accommodation

GROUND FLOOR

Hallway
 Separate Toilet: 6'9 x 2'8 (2.06m x 0.81m)
 Lounge: 16'3 x 10'10 (4.96m x 3.30m)
 Dining Room: 10'10 x 7'9 (3.30m x 2.36m)
 Office: 11'3 x 7'0 (3.43m x 2.14m)
 Kitchen: 12'1 x 9'4 (3.69m x 2.85m)
 Lean-to: 25'5 x 2'10 (7.75m x 0.86m)

FIRST FLOOR

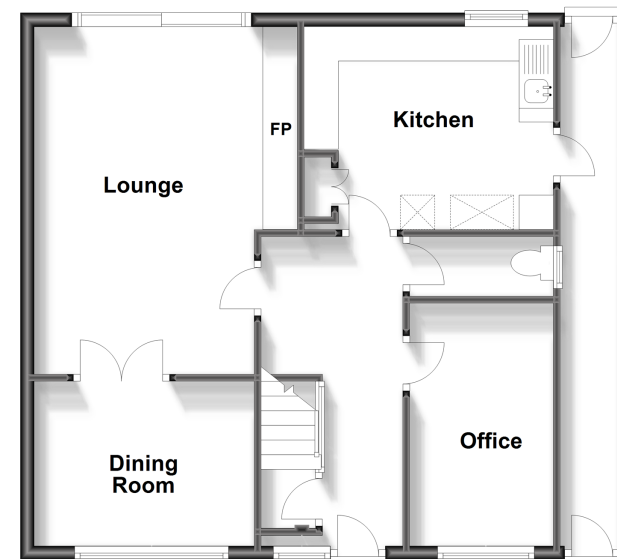
Landing
 Bedroom 1: 11'11 x 9'1 (3.63m x 2.77m)
 Ensuite Bathroom: 8'11 x 6'4 (2.72m x 1.93m)
 Bedroom 2: 11'0 x 8'2 (3.36m x 2.49m)
 Bedroom 3: (L-shaped) 10'2 x 7'6 (3.10m x 2.29m) plus 6'8 x 1'5 (2.03m x 0.43m)
 Shower Room: (L-shaped) 6'5 x 4'9 (1.96m x 1.45m) plus 3'6 x 1'10 (1.07m x 0.56m)

OUTSIDE

Double Garage
 Front Garden
 Large Rear Garden
 Off Road Parking To Rear

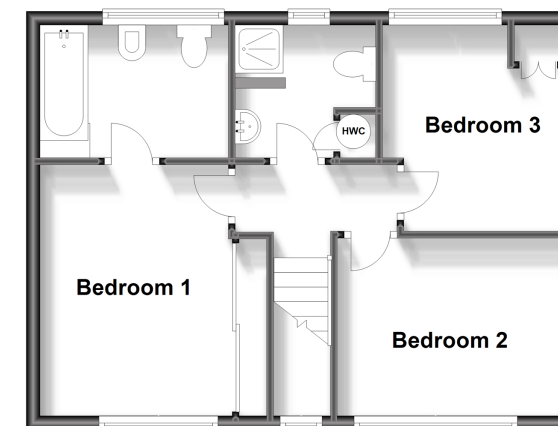
Ground Floor

Approx. 64.4 sq. metres (692.9 sq. feet)



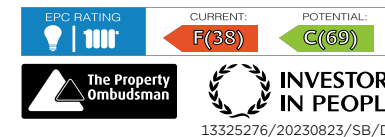
First Floor

Approx. 43.2 sq. metres (465.3 sq. feet)



Call Meopham - 01474 813100 ■ wardsofKent.co.uk

- Asbestos is present at this property, please contact us before proceeding
- If buying to let, the energy rating will need to be improved to at least 'E' rating before you can let the property
- Legal advice should be taken to verify fixtures/fittings, planning, alterations and/or lease details
- Appliances & services are untested, dimensions are approximate and floor plans are not to scale
- Through a Homewise Home For Life Plan people aged 60+ can secure this property for up to 59% less, by purchasing a Lifetime Lease.



13325276/20230823/SB/DF