



Price
£575,000

Freehold

4x  2x  2x 

**The Russets, Meopham,
Kent, DA13**

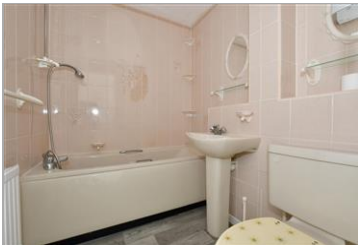
OVER 60?

Secure this property
for up to **59% less!**



Video Tour available

Wards
Helping you move forwards



Main features

- Spacious layout downstairs with opportunity to open plan
- Potential to extend (subject to usual consents)
- Recently decorated with new carpets and fresh paintwork
- Incredible size driveway for ample vehicles
- Close to Meopham School

Accommodation

GROUND FLOOR

Hallway

Cloakroom: 4'11 x 3'4 (1.50m x 1.02m)

Lounge: (L-shaped) 14'1 x 11'11 (4.30m x 3.63m) plus 8'11 x 2'4 (2.72m x 0.71m)

Dining Room: 10'1 x 9'10 (3.08m x 3.00m)

Kitchen: 12'1 x 8'5 (3.69m x 2.57m)

Utility Room: 13'4 x 7'9 (4.07m x 2.36m)

Conservatory: 18'5 x 10'0 (5.62m x 3.05m)

Garden Room: 9'0 x 6'3 (2.75m x 1.91m)

FIRST FLOOR

Landing

Bedroom 1: (L-shaped) 10'5 x 9'4 (3.18m x 2.85m) plus 2'11 x 2'10 (0.89m x 0.86m)

Ensuite Shower Room: 5'7 x 5'1 (1.70m x 1.55m)

Bedroom 2: 10'4 x 9'0 (3.15m x 2.75m)

Bedroom 3: 7'4 x 7'4 (2.24m x 2.24m)

Bedroom 4: 7'3 x 7'0 (2.21m x 2.14m)

Bathroom: 6'9 x 5'6 (2.06m x 1.68m)

OUTSIDE

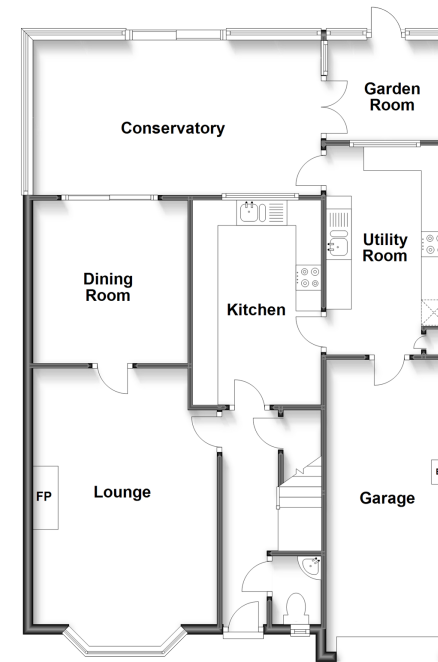
Garage

Driveway

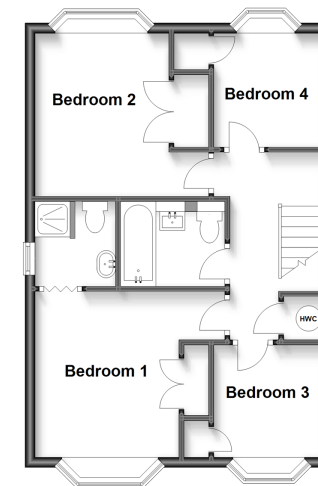
Front Garden

Rear Garden

Ground Floor
Approx. 96.2 sq. metres (1035.3 sq. feet)



First Floor
Approx. 48.5 sq. metres (522.1 sq. feet)



Call Meopham - 01474 813100 ■ wardsof Kent.co.uk

- Legal advice should be taken to verify fixtures/fittings, planning, alterations and/or lease details
- Appliances & services are untested, dimensions are approximate and floor plans are not to scale
- Through a Homewise Home For Life Plan people aged 60+ can secure this property for up to 59% less, by purchasing a Lifetime Lease.



13325505/20221231/SB/DF