



**Guide Price**  
**£620,000**

**Freehold**

4x  2x  2x 

**Whitepost Lane,  
Culverstone, Kent, DA13**

**OVER 60?**

You could get up to  
**59% off** the price!\*



**Video Tour available**

*Wards*  
Helping you move forwards





## Main features

- Plenty of parking with front and rear driveways, including garage
- Walking distance to local amenities
- Picturesque rear garden presented in a stunning condition
- Spacious accommodation with plenty of entertaining areas
- Catchment for desirable primary and secondary schools

## Accommodation

### GROUND FLOOR

Porch  
Hallway  
Cloakroom: 5'9 x 3'6 (1.75m x 1.07m)  
Lounge: 17'11 x 11'7 (5.46m x 3.53m)  
Dining Room: 11'3 x 9'7 (3.43m x 2.92m)  
Kitchen: 11'3 x 9'8 (3.43m x 2.95m)  
Utility Room: 14'8 x 7'8 (4.47m x 2.34m)  
Lean To: 10'2 x 8'0 (3.10m x 2.44m)

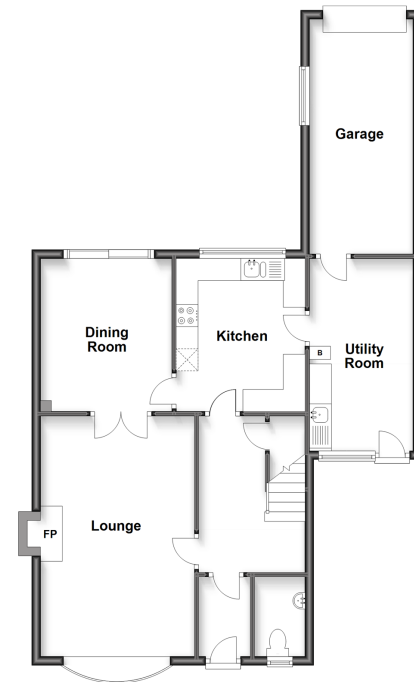
### FIRST FLOOR

Landing  
Bedroom 1: 11'7 into fitted wardrobes x 10'5 (3.53m x 3.18m)  
Ensuite Shower Room: 6'9 x 2'7 (2.06m x 0.79m)  
Bedroom 2: 11'4 x 7'2 (3.46m x 2.19m)  
Bedroom 3: 9'8 x 8'5 (2.95m x 2.57m) narrowing to 2'11 x 2'5 (0.89m x 0.74m)  
Bedroom 4: 9'3 x 7'11 (2.82m x 2.41m)  
Bathroom: 7'0 x 6'9 (2.14m x 2.06m)

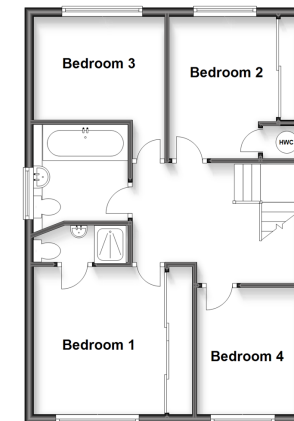
### OUTSIDE

Driveway  
Garage: 17'4 x 8'0 (5.29m x 2.44m)  
Front Garden  
Rear Garden

**Ground Floor**  
Approx. 78.3 sq. metres (843.2 sq. feet)



**First Floor**  
Approx. 54.5 sq. metres (586.4 sq. feet)



**Call Meopham - 01474 813100 ■ [wardsof Kent.co.uk](http://wardsof Kent.co.uk)**

- Legal advice should be taken to verify fixtures/fittings, planning, alterations and/or lease details
- Appliances & services are untested, dimensions are approximate and floor plans are not to scale
- Our Homewise partnership offer a 'Home for Life' plan to buyers over 60, granting a lifetime lease for your protection and reducing the purchase price by up to 59%



13325567/20221105/RC/DF