



Price
£560,000

Freehold

2x  1x  2x 

**Red Street, Southfleet,
Kent, DA13**

OVER 60?

Secure this property
for up to **59% less!**

Wards
Helping you move forwards



Main features

- Spectacular far-reaching countryside views from rear garden
- Spacious garage and workshop
- Charming post-WW1 cottage formerly used as doctor's surgery
- Potential to extend to the rear (subject to planning consents)
- Close to Ebbsfleet International Station

Accommodation

SPLIT LEVEL GROUND FLOOR

Hallway

Cloakroom: 5'2 x 3'3 (1.58m x 0.99m)

Lounge: 13'11 x 12'0 (4.24m x 3.66m)

Dining Room: 10'1 x 9'8 (3.08m x 2.95m)

Kitchen: (L-shaped) 11'9 x 11'6 (3.58m x 3.51m)
plus 7'11 x 5'8 (2.41m x 1.73m)

Utility Room: 5'4 x 4'11 (1.63m x 1.50m)

FIRST FLOOR

Landing

Bedroom 1: 12'5 x 11'10 (3.79m x 3.61m)

Bedroom 2: 10'1 x 9'3 (3.08m x 2.82m)

Bathroom: (L-shaped) 11'8 x 7'3 (3.56m x 2.21m)
plus 6'9 x 1'7 (2.06m x 0.48m)

OUTSIDE

Shared Driveway

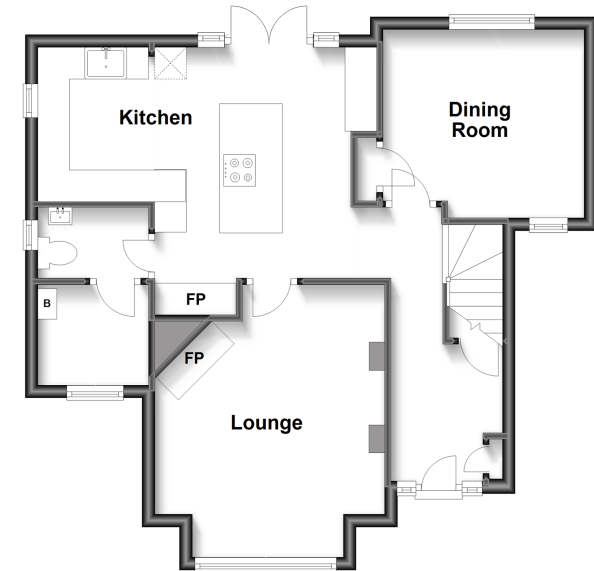
Garage/Workshop: 15'3 x 10'6 (4.65m x 3.20m)
plus 10'6 x 9'5 (3.20m x 2.87m)

Front Garden

Rear Garden

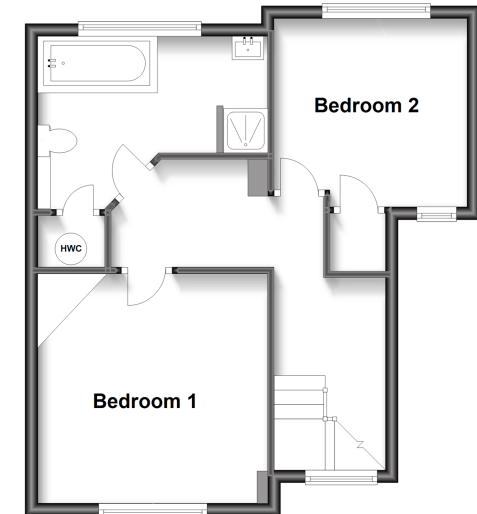
Split Level Ground Floor

Approx. 55.3 sq. metres (595.2 sq. feet)



First Floor

Approx. 43.8 sq. metres (471.5 sq. feet)



Call Meopham - 01474 813100 ■ wardsof Kent.co.uk

- Legal advice should be taken to verify fixtures/fittings, planning, alterations and/or lease details
- Appliances & services are untested, dimensions are approximate and floor plans are not to scale
- Through a Homewise Home For Life Plan people aged 60+ can secure this property for up to 59% less, by purchasing a Lifetime Lease.



13325691/20230609/SB/DF