



OVER 60?

Secure this property
for up to **59% less!**

Price

£950,000

Freehold

4x  2x  2x 

**Chapmans Hill,
Meopham, Kent, DA13**

Wards
Helping you move forwards



Main features

- Private electric gated entrance
- Horticulturists dream with incredible size rear garden
- Versatile accommodation with excellent size bedrooms to both floors
- Set in an idyllic location of Meopham
- Spacious log cabin, ideal for working from home

Accommodation

GROUND FLOOR

Hallway
 Lounge: 15'9 x 13'8 (4.80m x 4.17m)
 Dining Room: 14'1 x 10'5 (4.30m x 3.18m)
 Kitchen: 15'9 x 11'6 (4.80m x 3.51m)
 Utility Room: 10'4 x 4'4 (3.15m x 1.32m)
 Cloakroom: 7'1 x 3'4 (2.16m x 1.02m)
 Bathroom: 11'6 x 6'2 (3.51m x 1.88m)
 Bedroom 1: 14'1 x 13'0 (4.30m x 3.97m)
 Bedroom 2: 13'2 x 12'9 (4.02m x 3.89m)

FIRST FLOOR

Landing
 Bedroom 3: 14'7 x 11'6 (4.45m x 3.51m)
 Bedroom 4: 13'2 x 11'9 (4.02m x 3.58m)
 Bathroom: 7'3 x 6'9 (2.21m x 2.06m)

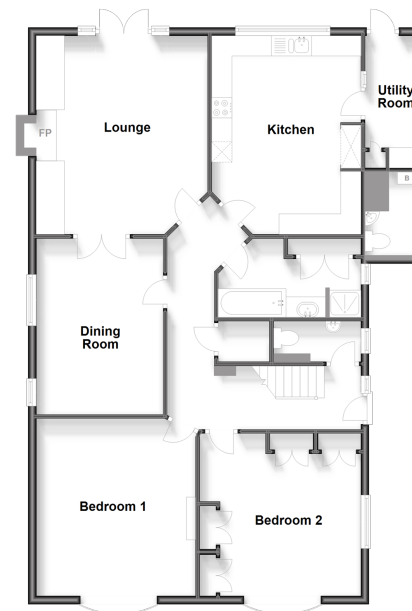
OUTSIDE

Detached Garage: 18'7 x 13'2 (5.67m x 4.02m)
 Gated Driveway
 Front Garden
 Large Rear Garden
 Log Cabin: 17'3 x 12'8 (5.26m x 3.86m)
 Outside Toilet: 6'8 x 4'7 (2.03m x 1.40m)

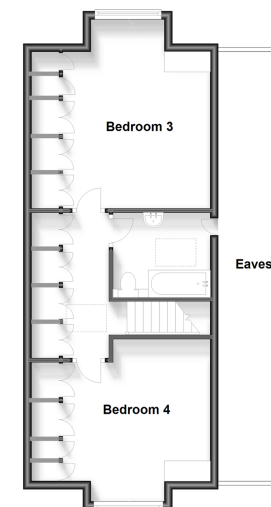
Call Meopham - 01474 813100 ■ wardsofkent.co.uk

- If buying to let, the energy rating will need to be improved to at least 'E' rating before you can let the property
- Legal advice should be taken to verify fixtures/fittings, planning, alterations and/or lease details
- Appliances & services are untested, dimensions are approximate and floor plans are not to scale
- Through a Homewise Home For Life Plan people aged 60+ can secure this property for up to 59% less, by purchasing a Lifetime Lease.

Ground Floor
 Approx. 119.2 sq. metres (1283.1 sq. feet)



First Floor
 Approx. 49.2 sq. metres (529.2 sq. feet)



13325762/20230727/SB/KD