



Price
£675,000

Freehold

3x  1x  3x 

**Church Street,
Southfleet, Kent, DA13**

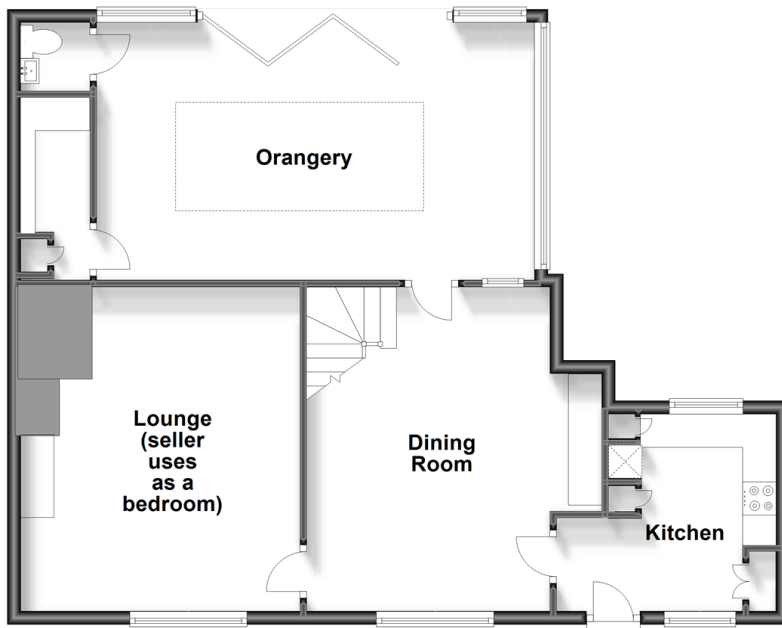
OVER 60?

Secure this property
for up to **59% less!**

Wards
Helping you move forwards

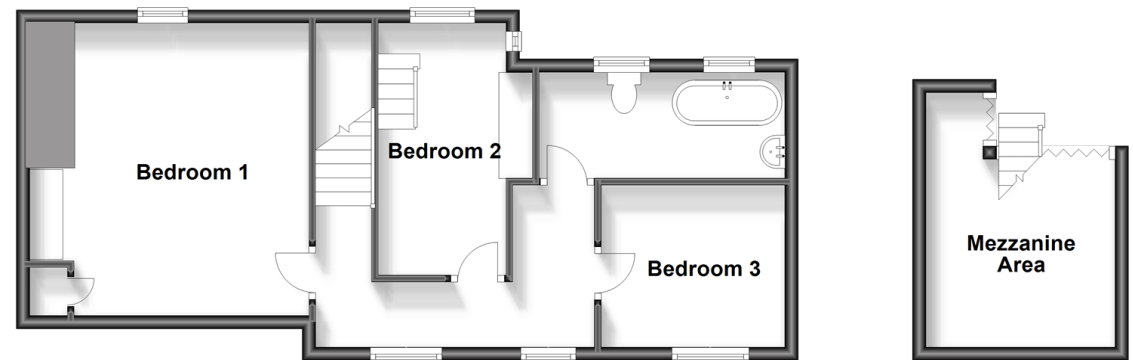
Split Level Ground Floor

Approx. 80.0 sq. metres (861.3 sq. feet)



First Floor & Mezzanine

Approx. 59.1 sq. metres (635.9 sq. feet)



Accommodation

SPLIT LEVEL GROUND FLOOR

Kitchen: 11'5 x 9'11 (3.48m x 3.02m)

Dining Room: 15'2 x 11'10 (4.63m x 3.61m)

Lounge(seller uses as bedroom): 16'1 x 13'8 (4.91m x 4.17m)

Orangery: 21'10 x 12'4 (6.66m x 3.76m)

Cloakroom: 4'1 x 3'2 (1.25m x 0.97m)

Utility Room: 8'3 x 4'1 (2.52m x 1.25m)

FIRST FLOOR & MEZZANINE

Landing

Bedroom 1: 16'3 x 13'8 (4.96m x 4.17m)

Bedroom 2: 14'2 x 8'3 (4.32m x 2.52m)

Bedroom 3: 9'1 x 7'11 (2.77m x 2.41m)

Bathroom: 11'10 x 5'4 (3.61m x 1.63m)

Mezzanine Area

OUTSIDE

Front Garden

Rear Garden



Main features

- Original features including inglenook fireplaces and vaulted ceilings
- Stunning oak framed Orangery with bi-folding doors to rear garden
- Picturesque central village location
- Unique 1480's Tudor house with cellar providing useable storage
- Short drive to Ebbsfleet International and Longfield Station



Nearest Schools

Primary Schools: Sedley's C of E Voluntary Controlled Primary 0.0 miles, Painters Ash Primary 1.0 miles, Langafel C of E Voluntary Controlled Primary 1.5 miles
Secondary Schools: Northfleet School for Girls 1.2 miles, Longfield Academy 1.4 miles



Transport Information

Train Stations: Longfield 1.5 miles, Ebbsfleet International 2.8 miles



Address

Church Street, Southfleet, Kent, DA13



Directions

For directions to this property please contact us.



Wards
Helping you move forwards

Call Meopham Branch 01474 813100 ■ wardsofkent.co.uk



- If buying to let, the energy rating will need to be improved to at least 'E' rating before you can let the property
- Appliances & services are untested, dimensions are approximate and floor plans are not to scale

- Legal advice should be taken to verify fixtures/fittings, planning, alterations and/or lease details
- Through a Homewise Home For Life Plan people aged 60+ can secure this property for up to 59% less, by purchasing a Lifetime Lease.



13325796/20240106/SB/KD