



Price

£900,000

Freehold

4x  2x  3x 

**The Maples, New Barn,
Longfield, Kent, DA3**

OVER 60?

Secure this property
for up to **59% less!**

Wards
Helping you move forwards



Main features

- Double garage and large driveway, suitable for multiple cars
- Planning permission granted for impressive transformation (Title Ref: 22/00005/FUL)
- Short drive to Longfield Station
- Largest plot on the cul-de-sac
- Downstairs study, ideal for working from home

Accommodation

GROUND FLOOR

Entrance Hall: 14'11 x 5'11 (4.55m x 1.80m)
 Cloakroom: 4'11 x 3'6 (1.50m x 1.07m)
 Lounge: 15'5 x 14'5 (4.70m x 4.40m)
 Sitting Area: 15'5 x 13'10 (4.70m x 4.22m)
 Dining Room: 11'0 x 8'11 (3.36m x 2.72m)
 Study: 9'11 x 8'6 (3.02m x 2.59m)
 Kitchen: 10'6 x 9'6 (3.20m x 2.90m)
 Utility Area: 8'8 x 5'5 (2.64m x 1.65m)

FIRST FLOOR

Landing
 Bedroom 1: 13'7 x 10'6 (4.14m x 3.20m)
 Ensuite Shower Room: 6'2 x 5'0 (1.88m x 1.53m)
 Bedroom 2: 10'6 x 10'6 (3.20m x 3.20m)
 Bedroom 3: 9'10 x 8'7 (3.00m x 2.62m)
 Bedroom 4: 11'12 x 10'5 (3.66m x 3.18m)
 Bathroom: 6'8 x 5'6 (2.03m x 1.68m)

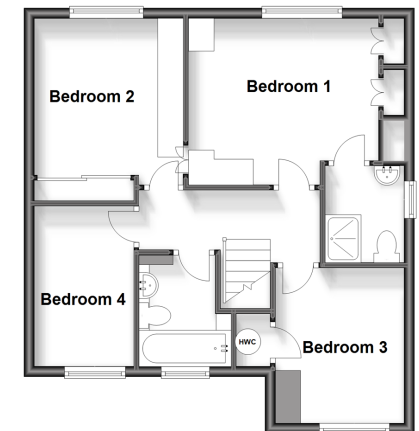
OUTSIDE

Double Garage: 17'3 x 16'11 (5.26m x 5.16m)
 Driveway
 Front Garden
 Rear Garden

Ground Floor
 Approx. 107.7 sq. metres (1158.9 sq. feet)



First Floor
 Approx. 51.4 sq. metres (553.8 sq. feet)



Call Meopham - 01474 813100 ■ wardsofkennt.co.uk

- Legal advice should be taken to verify fixtures/fittings, planning, alterations and/or lease details
- Appliances & services are untested, dimensions are approximate and floor plans are not to scale
- Through a Homewise Home For Life Plan people aged 60+ can secure this property for up to 59% less, by purchasing a Lifetime Lease.



13325800/20231227/SB/KD