



Price
£615,000

Freehold

3x  1x  1x 

**Cheshunt Close,
Meopham, Kent, DA13**

OVER 60?

Secure this property
for up to **59% less!**

Wards
Helping you move forwards



Main features

- **Expansive, wrap-around rear garden**
- **Upstairs cloakroom with double bedrooms**
- **Unextended, with potential to increase footprint (subject to consents)**
- **Single garage and driveway**
- **Walking distance from Meopham Station**

Accommodation

GROUND FLOOR

Hallway

Lounge: 19'10 x 11'0 (6.05m x 3.36m)

Kitchen/Diner: (L-shaped) 13'0 x 11'1 (3.97m x 3.38m) plus 8'6 x 6'11 (2.59m x 2.11m)

Bathroom: 7'0 x 6'4 (2.14m x 1.93m)

Lean-to: 7'8 x 3'9 (2.34m x 1.14m)

SPLIT LEVEL FIRST FLOOR

Landing

Bedroom 1: (L-shaped) 14'9 x 11'1 (4.50m x 3.38m) plus 4'11 x 1'9 (1.50m x 0.53m)

Bedroom 2: (L-shaped) 11'0 x 8'0 (3.36m x 2.44m) plus 4'11 x 0'11 (1.50m x 0.28m)

Bedroom 3: 11'0 x 8'0 (3.36m x 2.44m)

Cloakroom: 6'8 x 2'11 (2.03m x 0.89m)

OUTSIDE

Garage

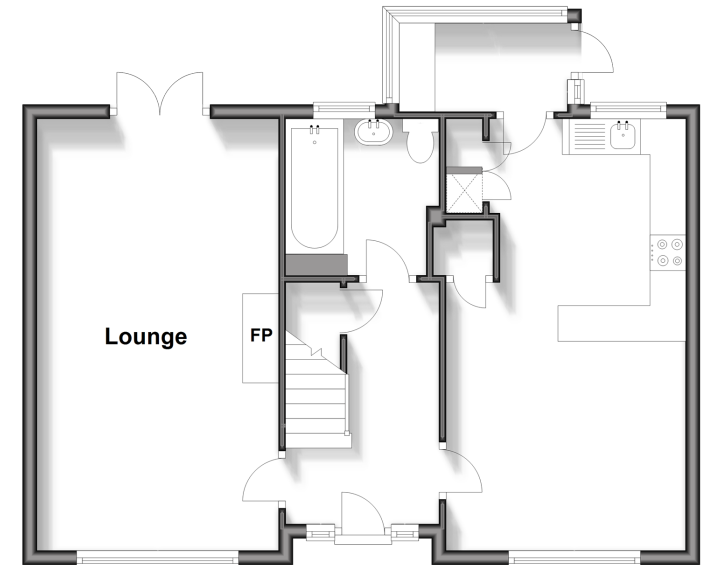
Driveway

Front Garden

Rear Garden

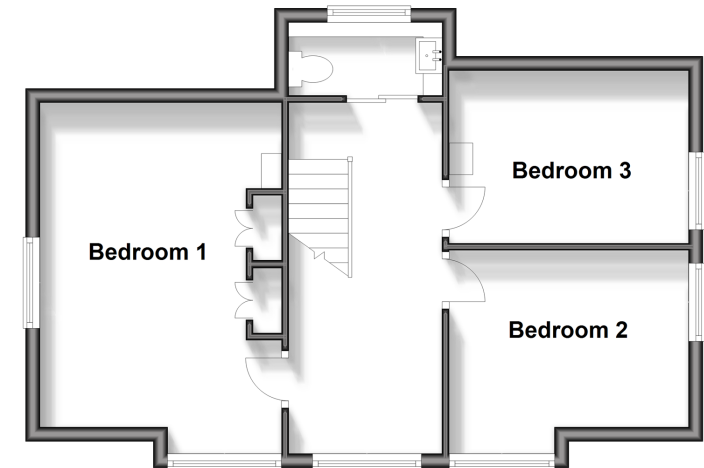
Ground Floor

Approx. 57.2 sq. metres (615.7 sq. feet)



Split Level First Floor

Approx. 47.3 sq. metres (509.4 sq. feet)



Call Meopham - 01474 813100 ■ wardsof Kent.co.uk

- Legal advice should be taken to verify fixtures/fittings, planning, alterations and/or lease details
- Appliances & services are untested, dimensions are approximate and floor plans are not to scale
- Through a Homewise Home For Life Plan people aged 60+ can secure this property for up to 59% less, by purchasing a Lifetime Lease.



13325835/20240106/SB/DF