



Price
£225,000

Leasehold

1x  1x  1x 

**Russell House, Red
Street, Southfleet, Kent,
DA13**

OVER 60?

Secure this property
for up to **59% less!**

Wards
Helping you move forwards



Main features

- Picturesque countryside location with stunning views
- Fully redecorated throughout with new kitchen and bathroom
- Residents car park to the rear
- Short drive to Ebbsfleet International Station
- Exciting first time purchase or investment opportunity

Accommodation

FIRST FLOOR

Hallway

Lounge/Diner: (L-shaped) 15'5 x 11'6 (4.70m x 3.51m) plus 4'1 x 1'8 (1.25m x 0.51m)

Kitchen: (L-shaped) 6'9 x 6'6 (2.06m x 1.98m) plus 4'4 x 3'2 (1.32m x 0.97m)

Bedroom: (L-shaped) 12'11 x 9'7 (3.94m x 2.92m) plus 4'4 x 2'6 (1.32m x 0.76m)

Bathroom: (L-shaped) 6'4 x 5'5 (1.93m x 1.65m) plus 3'10 x 1'5 (1.17m x 0.43m)

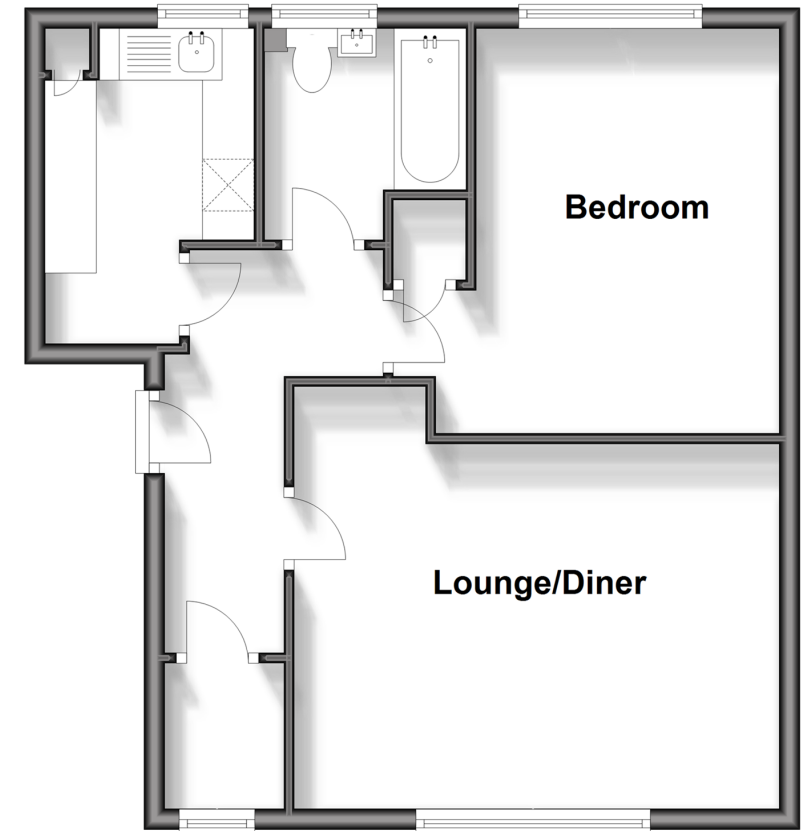
OUTSIDE

Communal Car Park

Communal Rear Garden

First Floor

Approx. 48.7 sq. metres (523.7 sq. feet)



Call Meopham - 01474 813100 ■ wardsof Kent.co.uk

- Legal advice should be taken to verify fixtures/fittings, planning, alterations and/or lease details
- Appliances & services are untested, dimensions are approximate and floor plans are not to scale
- Through a Homewise Home For Life Plan people aged 60+ can secure this property for up to 59% less, by purchasing a Lifetime Lease.



13325863/20240203/SB/DF