



**Price**  
**£550,000**

**Freehold**

2x  1x  1x 

**Round Street, Sole  
Street, Kent, DA13**

**OVER 60?**

Secure this property  
for up to **59% less!**

*Wards*  
Helping you move forwards





## Main features

- **Magnificent development opportunity (subject to usual planning consents)**
- **Large, gated driveway with garage and outbuildings**
- **Close to Meopham amenities**
- **Walkers' paradise with fields nearby**
- **Short drive to Sole Street train station**

## Accommodation

### SPLIT LEVEL GROUND FLOOR

Porch  
Hallway  
Kitchen: 12'4 x 8'10 (3.76m x 2.69m)  
Lounge: 16'11 x 11'4 (5.16m x 3.46m)  
Utility Room: 5'7 x 4'7 (1.70m x 1.40m)  
Separate Toilet: 4'1 x 2'8 (1.25m x 0.81m)  
Rear Lobby: 9'11 x 4'3 (3.02m x 1.30m)

### FIRST FLOOR

Landing  
Bedroom 1: 14'9 x 10'2 (4.50m x 3.10m)  
Bedroom 2: 9'5 x 9'1 (2.87m x 2.77m)  
Bathroom: 11'5 x 6'7 (3.48m x 2.01m)

### OUTBUILDING

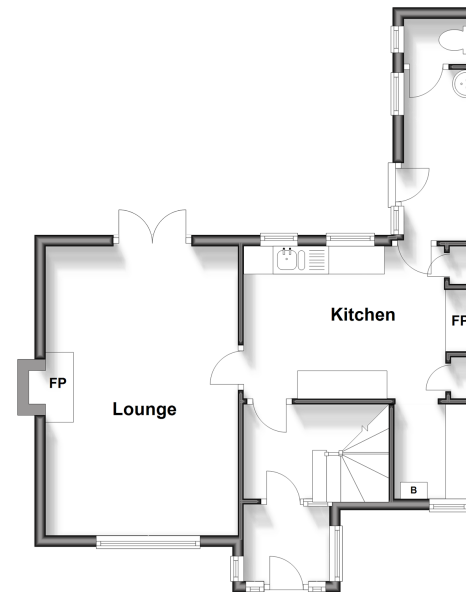
Garage

### OUTSIDE

Front Garden  
Rear Garden  
Side Garden  
Driveway  
Stables

### Split Level Ground Floor

Approx. 44.3 sq. metres (477.3 sq. feet)



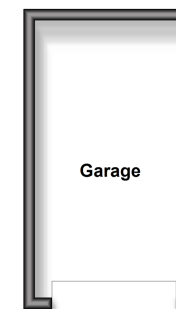
### First Floor

Approx. 36.9 sq. metres (397.6 sq. feet)



### Outbuilding

Approx. 13.0 sq. metres (139.6 sq. feet)



**Call Meopham - 01474 813100 ■ [wardsofKent.co.uk](http://wardsofKent.co.uk)**

- Legal advice should be taken to verify fixtures/fittings, planning, alterations and/or lease details
- Appliances & services are untested, dimensions are approximate and floor plans are not to scale
- Through a Homewise Home For Life Plan people aged 60+ can secure this property for up to 59% less, by purchasing a Lifetime Lease.



13325907/20240406/SB/HF