



Guide Price
£725,000

Freehold

4x  2x  3x 

**Broomfields, Hartley,
Longfield, Kent, DA3**

OVER 60?

Secure this property
for up to **59% less!**

Wards
Helping you move forwards



Main features

- Large driveway with a garage
- Versatile living space with extended open plan kitchen
- Utility room for extra storage space
- Landscaped rear garden with private seating area
- Close to Longfield Station

Accommodation

GROUND FLOOR

Cloakroom
 Lounge: 15'0 x 14'0 (4.58m x 4.27m)
 Dining Room: 11'0 x 9'0 (3.36m x 2.75m)
 Study: 10'0 x 8'0 (3.05m x 2.44m)
 Kitchen: 14'0 x 10'0 (4.27m x 3.05m)
 Utility Room

FIRST FLOOR

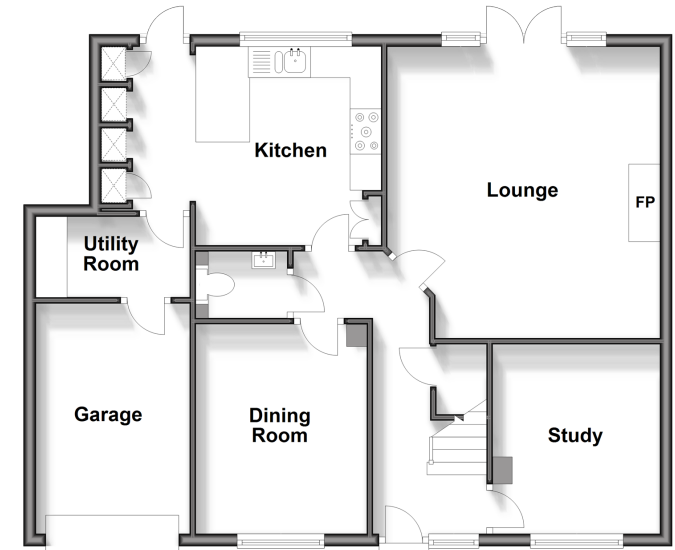
Landing
 Bedroom 1: 11'0 x 10'0 (3.36m x 3.05m)
 Ensuite Shower Room
 Bedroom 2: 10'0 x 10'0 (3.05m x 3.05m)
 Bedroom 3: 9'0 x 8'0 (2.75m x 2.44m)
 Bedroom 4: 10'0 x 6'0 (3.05m x 1.83m)
 Bathroom

OUTSIDE

Garage
 Front Garden
 Rear Garden

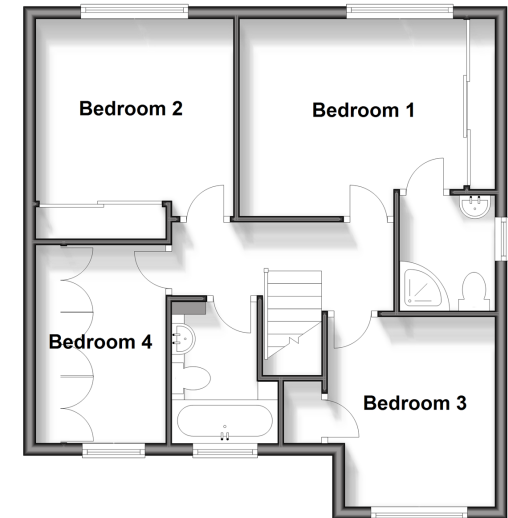
Ground Floor

Approx. 75.8 sq. metres (815.7 sq. feet)



First Floor

Approx. 52.8 sq. metres (568.7 sq. feet)



Call New Ash Green - 01474 872466 ■ wardsof Kent.co.uk

- Legal advice should be taken to verify fixtures/fittings, planning, alterations and/or lease details
- Appliances & services are untested, dimensions are approximate and floor plans are not to scale
- Through a Homewise Home For Life Plan people aged 60+ can secure this property for up to 59% less, by purchasing a Lifetime Lease.



13417339/20240501/MP/JH