



Price

£210,000

Leasehold

2x  1x  1x 

**Lance Croft, New Ash
Green, Longfield, Kent,
DA3**

OVER 60?

Secure this property
for up to **59% less!**

Wards
Helping you move forwards



Main features

- **Spacious first floor apartment with meadow outlook**
- **Private balcony & communal garden**
- **Peaceful development near local amenities**
- **Abundance of country walks nearby**
- **Private residential car park**

Accommodation

FIRST FLOOR

Entrance Hall

Lounge/Diner: 17'3 x 14'6 (5.26m x 4.42m)

Kitchen: 13'9 x 7'1 (4.19m x 2.16m)

Bedroom 1: 12'10 x 10'8 up to fitted wardrobes (3.91m x 3.25m)

Bedroom 2: 9'5 x 6'7 (2.87m x 2.01m)

Bathroom: 6'11 x 6'9 (2.11m x 2.06m)

Private Balcony

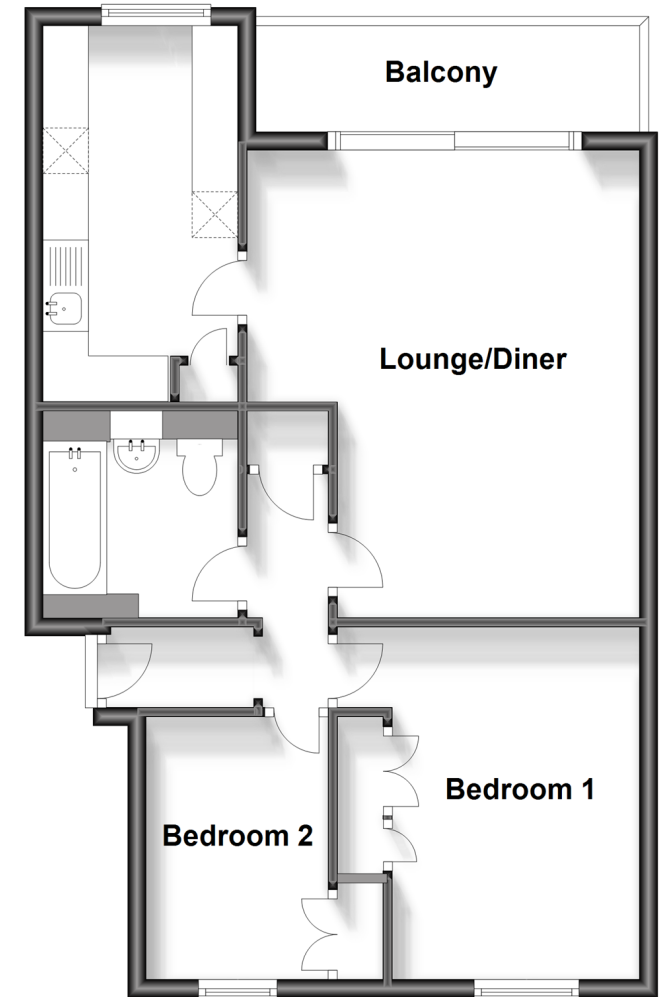
OUTSIDE

Balcony

Communal Garden

First Floor

Approx. 58.2 sq. metres (626.8 sq. feet)



Call New Ash Green - 01474 872466 ■ wardsofkent.co.uk

- Legal advice should be taken to verify fixtures/fittings, planning, alterations and/or lease details
- Appliances & services are untested, dimensions are approximate and floor plans are not to scale
- Through a Homewise Home For Life Plan people aged 60+ can secure this property for up to 59% less, by purchasing a Lifetime Lease.



13417802/20240319/JH/TT