



OVER 60?

Secure this property
for up to **59% less!**

Guide Price

£300,000

Freehold

2x  1x  1x 

**Ayelands, New Ash
Green, Longfield, Kent,
DA3**

Wards
Helping you move forwards



Main features

- Garage en bloc offering secure parking
- Immaculately presented
- End of terrace House
- Fantastic starter home for first time buyers
- Peaceful location within easy access of local amenities

Accommodation

GROUND FLOOR

Entrance Hall

Lounge: 15'1 x 13'10 (4.60m x 4.22m)

Kitchen : 13'9 x 7'3 (4.19m x 2.21m)

Dining Area: 9'5 x 7'7 (2.87m x 2.31m)

FIRST FLOOR

Landing

Bedroom 1: 10'10 x 9'6 (3.30m x 2.90m)

Bedroom 2: 11'0 x 8'11 (3.36m x 2.72m)

Bathroom: 7'4 x 4'7 (2.24m x 1.40m)

OUTSIDE

Rear Garden

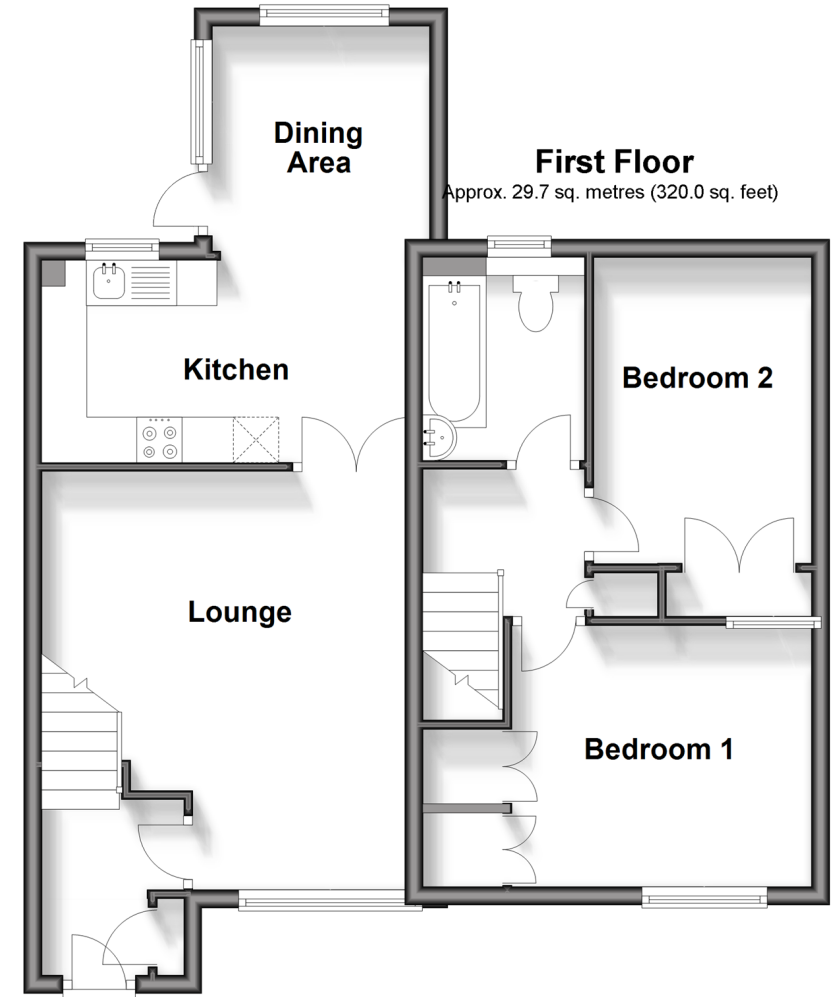
Garage En-bloc

Ground Floor

Approx. 37.4 sq. metres (402.7 sq. feet)

First Floor

Approx. 29.7 sq. metres (320.0 sq. feet)



Call New Ash Green - 01474 872466 ■ wardsof Kent.co.uk

- Legal advice should be taken to verify fixtures/fittings, planning, alterations and/or lease details
- Appliances & services are untested, dimensions are approximate and floor plans are not to scale
- Through a Homewise Home For Life Plan people aged 60+ can secure this property for up to 59% less, by purchasing a Lifetime Lease.



13418120/20240314/JH/LP