



Price
£185,000

Leasehold

1x  1x  1x 

**West Shaw, Longfield,
Kent, DA3**

OVER 60?

Secure this property
for up to **59% less!**

Wards
Helping you move forwards



Main features

- Cul-de-sac location within easy reach of Longfield train station
- Spacious ground floor apartment
- Communal gardens to the rear
- Fantastic property for first time buyers or landlords looking to grow their portfolio
- Brilliant opportunity to put your own stamp on this current blank canvas

Accommodation

GROUND FLOOR

Entrance Hall

Lounge: 15'10 x 9'7 (4.83m x 2.92m)

Kitchen: 9'1 x 9'1 (2.77m x 2.77m)

Shower Room: 6'4 x 5'9 (1.93m x 1.75m)

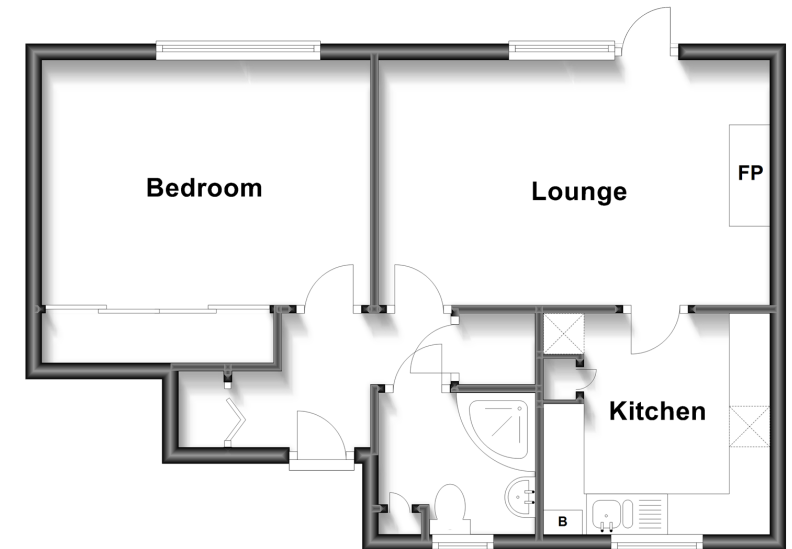
Bedroom: 13'1 x 10'1 up to fitted wardrobes (3.99m x 3.08m)

OUTSIDE

Communal Garden

Ground Floor

Approx. 46.2 sq. metres (497.5 sq. feet)



Call New Ash Green - 01474 872466 ■ wardsofkent.co.uk

■ Legal advice should be taken to verify fixtures/fittings, planning, alterations and/or lease details
 ■ Through a Homewise Home For Life Plan people aged 60+ can secure this property for up to 59% less, by purchasing a Lifetime Lease.

■ Appliances & services are untested, dimensions are approximate and floor plans are not to scale