



OVER 60?

Secure this property
for up to **59% less!**

Price

£765,000

Freehold

4x  2x  2x 

**Gresham Avenue,
Hartley, Longfield, Kent,
DA3**

Wards
Helping you move forwards



Main features

- Detached chalet bungalow
- Large Driveway for multiple cars
- Secluded rear garden
- Fantastic potential to extend with planning already in place
- Semi-rural village location of Hartley within easy reach of a selection of primary and secondary schools, station and motorway links

Accommodation

GROUND FLOOR

Entrance Hall
 Bedroom 1: 18'9 x 8'10 (5.72m x 2.69m)
 Former Garage/ Bedroom 2: 18'7 x 5'6 (5.67m x 1.68m)
 En-suite Shower: 8'7 x 4'1 (2.62m x 1.25m)
 Bathroom: 15'9 x 5'10 (4.80m x 1.78m)
 Kitchen: 18'1 x 8'3 (5.52m x 2.52m)
 Dining Area: 11'9 x 10'5 (3.58m x 3.18m)
 Lounge: 20'4 x 14'4 (6.20m x 4.37m)
 Family Room: 20'3 x 14'7 (6.18m x 4.45m)
 Office: 12'2 x 6'5 (3.71m x 1.96m)

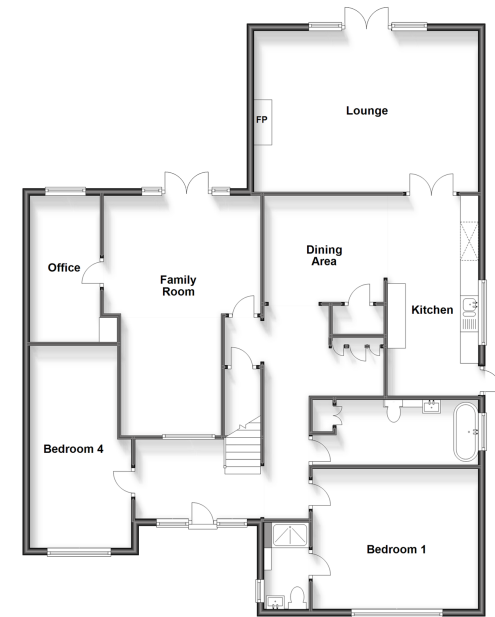
FIRST FLOOR

Bedroom 3: 15'5 x 12'8 (4.70m x 3.86m)
 Bedroom 4: 11'9 x 8'8 (3.58m x 2.64m)
 LOFT with planning permission

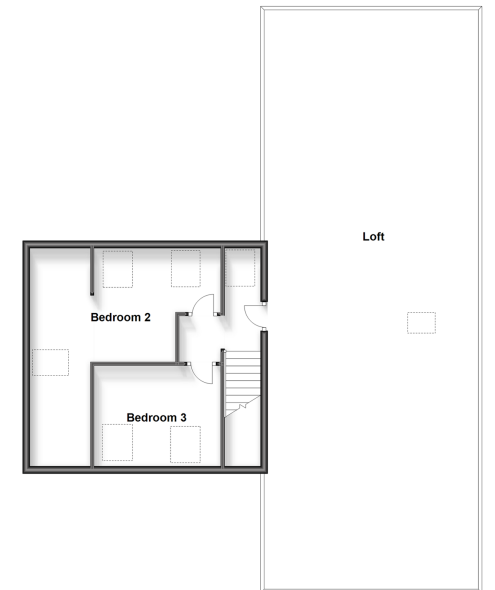
OUTSIDE

Rear Garden
 Large Driveway

Split Level Ground Floor
 Approx. 156.7 sq. metres (1686.8 sq. feet)



First Floor
 Approx. 38.5 sq. metres (415.9 sq. feet)



Call New Ash Green - 01474 872466 ■ wardsof Kent.co.uk

- Legal advice should be taken to verify fixtures/fittings, planning, alterations and/or lease details
- Appliances & services are untested, dimensions are approximate and floor plans are not to scale
- Through a Homewise Home For Life Plan people aged 60+ can secure this property for up to 59% less, by purchasing a Lifetime Lease.



13418530/20231028/TT/TT