



Guide Price
£500,000

Freehold

4x  3x  3x 

**Spring Cross, New Ash
Green, Longfield, Kent,
DA3**

OVER 60?

Secure this property
for up to **59% less!**

Wards
Helping you move forwards

Accommodation

GROUND FLOOR

Porch

Cloakroom

Dining Room: 13'6 x 11'10 (4.12m x 3.61m)

Utility Room: 11'4 x 7'6 (3.46m x 2.29m)

Lounge: 21'6 x 11'4 (6.56m x 3.46m)

Kitchen/Breakfast Area: 20'0 x 18'7 (6.10m x 5.67m)

FIRST FLOOR

Bedroom 1: 20'5 x 13'11 (6.23m x 4.24m)

En-Suite Shower Room: 7'4 x 4'3 (2.24m x 1.30m)

Bedroom 2: 12'1 x 8'0 (3.69m x 2.44m)

Bedroom 3: 11'0 x 8'10 (3.36m x 2.69m)

Bedroom 4: 11'3 x 9'5 (3.43m x 2.87m)

Bathroom: 7'10 x 6'4 (2.39m x 1.93m)

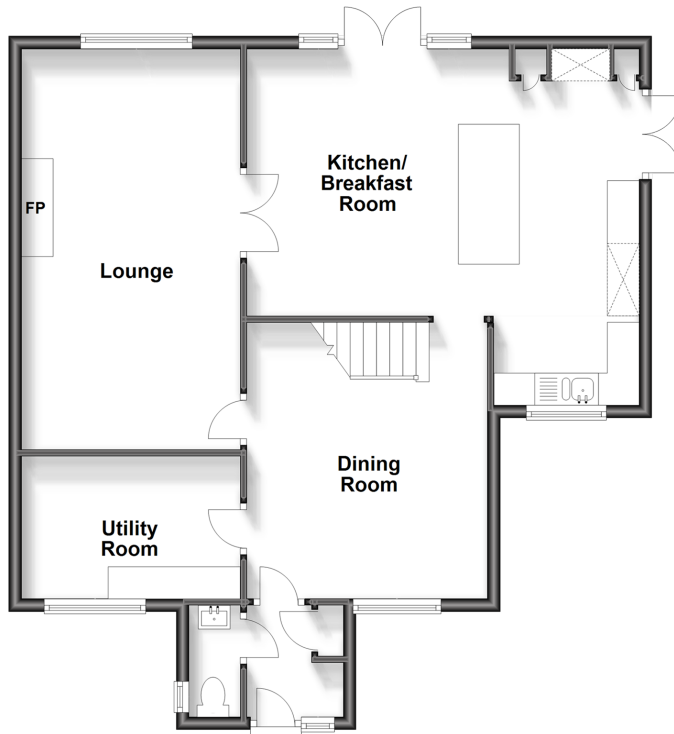
OUTSIDE

Garage En-Bloc

Rear Garden

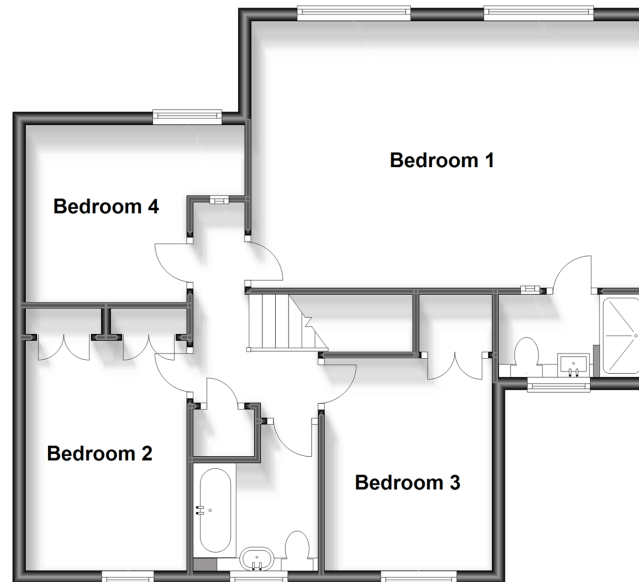
Ground Floor

Approx. 80.4 sq. metres (865.4 sq. feet)



First Floor

Approx. 70.2 sq. metres (755.7 sq. feet)





Main features

- Large detached house with double storey extension
- Secluded rear and side garden backing onto woodland
- Fantastic entertaining space with open plan, modern kitchen area
- Garage en-bloc
- Versatile reception room which is the ideal spot for home office or playroom



Nearest Schools

Primary Schools: New Ash Green Primary 0.9 miles, Hartley Primary 2.1 miles

Secondary Schools: Meopham School 2.5 miles, Longfield Academy 3.4 miles



Transport Information

Train Stations: Longfield 3.0 miles, Meopham 3.7 miles



Address

Spring Cross, New Ash Green, Longfield, Kent, DA3



Directions

For directions to this property please contact us.



Wards
Helping you move forwards

Call New Ash Green Branch 01474 872466 ■ wardsofkent.co.uk



■ Legal advice should be taken to verify fixtures/fittings, planning, alterations and/or lease details ■ Appliances & services are untested, dimensions are approximate and floor plans are not to scale
■ Through a Homewise Home For Life Plan people aged 60+ can secure this property for up to 59% less, by purchasing a Lifetime Lease.



13418895/20240420/JH/TT