



**Price**  
**£600,000**  
**Leasehold**

2x  2x  1x 

Fawkham Manor, Manor Lane, Fawkham,  
Kent, DA3

*Wards*  
Helping you move forwards



## Accommodation

APPROXIMATELY 1614 SQUARE FOOT

### LOWER GROUND FLOOR

Entrance Hallway

Kitchen/Lounge/Diner: 21'9 x 16'7 (6.63m x 5.06m)

Bedroom 1: 16'4 x 14'7 (4.98m x 4.45m)

En-suite Shower Room

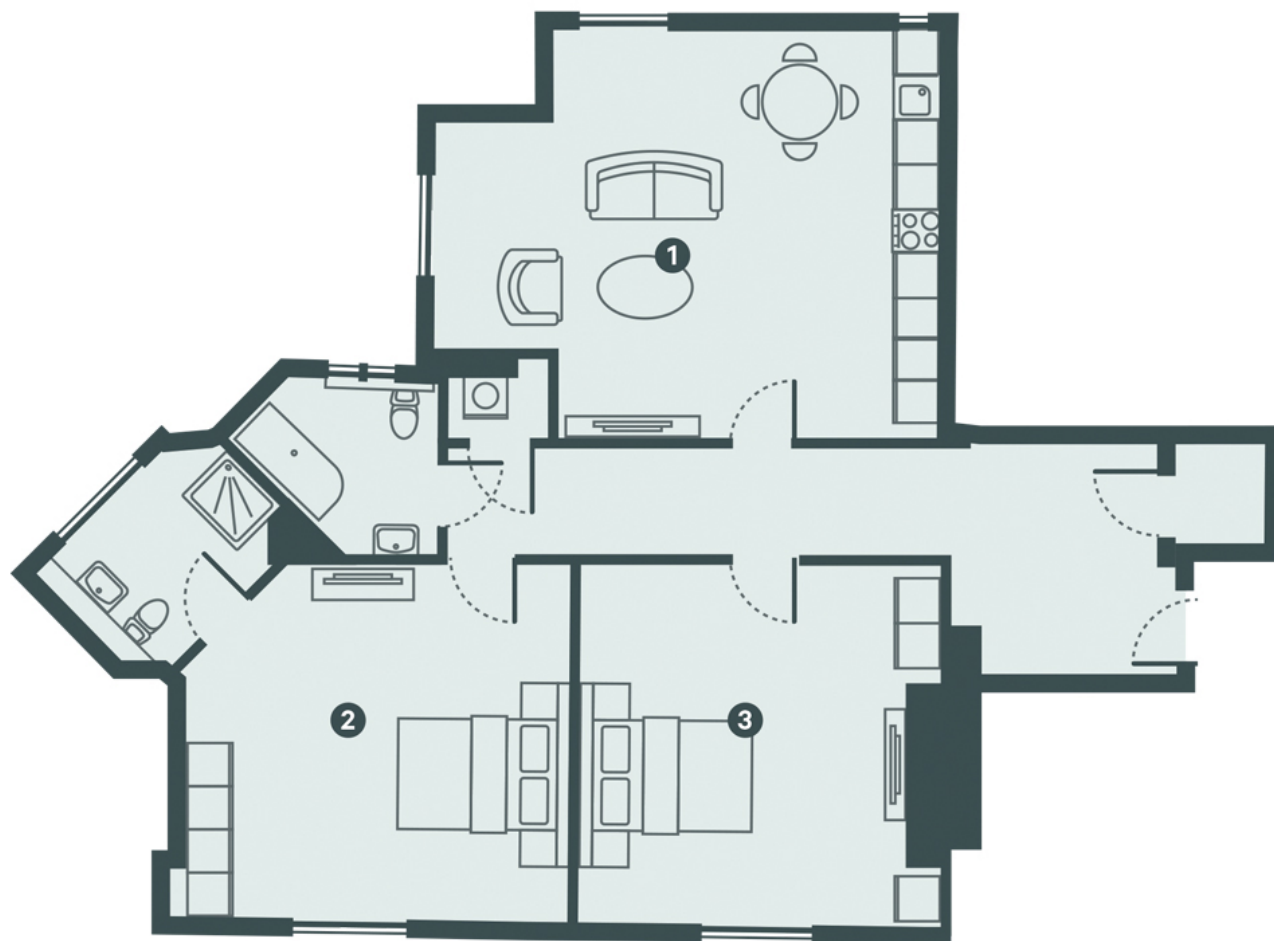
Bedroom 2: 14'5 x 13'6 (4.40m x 4.12m)

Bathroom

### OUTSIDE

Communal Gardens

2 Allocated Parking Spaces



Apartment 1  
Lower Ground Floor



## Main features

- Shaker style kitchens with quartz worktops and integrated appliances
- Contemporary bathroom suites and chrome heated towel rails
- Quality carpeting and engineered wood flooring mixed throughout
- 2 allocated parking spaces with electric vehicle charging points plus visitors parking bays
- 999 year lease and peppercorn ground rent



### Nearest Schools

Primary Schools: Fawkham C of E Voluntary Controlled Primary 0.3 miles, New Ash Green Primary 0.9 miles, Hartley Primary 1.0 miles

Secondary Schools: Longfield Academy 1.8 miles, Helen



### Transport Information

Train Stations: Longfield 1.7 miles, Farningham Road 2.9 miles, Meopham 3.3 miles



### Address

Fawkham Manor, Manor Lane, Fawkham, Kent, DA3



### Directions

For directions to this property please contact us.





Call New Ash Green Branch 01474 872466 ■ [wardsofkent.co.uk](https://wardsofkent.co.uk)



- If buying to let, the energy rating will need to be improved to at least 'E' rating before you can let the property
- Appliances & services are untested, dimensions are approximate and floor plans are not to scale

- Legal advice should be taken to verify fixtures/fittings, planning, alterations and/or lease details