



Price
£595,000

Freehold

4x  3x  2x 

**Fawkham Manor, Manor
Lane, Fawkham,
Longfield, Kent, DA3**

Wards
Helping you move forwards



Main features

- Contemporary style kitchens with quartz worktops and integrated appliances
- Contemporary bathroom suites and chrome heated towel rails
- Underfloor heating to ground floor and radiators to upper floors
- Quality carpeting and herringbone flooring mixed throughout

Accommodation

GROUND FLOOR

Entrance Hallway

Lounge: 12'5 x 8'9 (3.79m x 2.67m)

Kitchen/Dining/Family Room: 16'1 x 14'5 (4.91m x 4.40m)

Cloakroom

FIRST FLOOR

First Floor Landing

Bedroom 1: 15'7 x 11'2 (4.75m x 3.41m)

En-suite Shower Room

Bedroom 4: 10'8 x 7'9 (3.25m x 2.36m)

Family Shower Room

SECOND FLOOR

Second Floor Landing

Bedroom 2: 16'1 x 11'2 (4.91m x 3.41m)

Bedroom 3: 13'5 x 10'8 (4.09m x 3.25m)

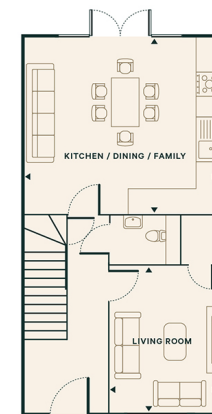
Family Bathroom

OUTSIDE

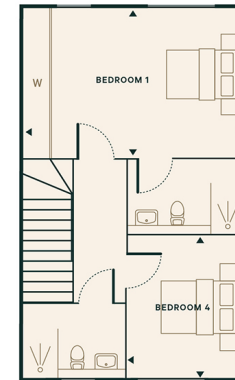
Front Garden

Rear Garden

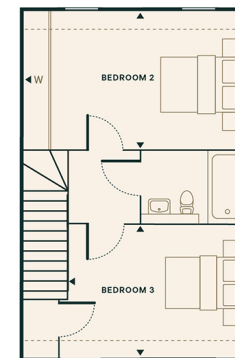
Allocated Parking



Townhouse - Ground Floor



Townhouse - First Floor



Townhouse - Second Floor

Call New Ash Green - 01474 872466 ■ wardsofkent.co.uk

- If buying to let, the energy rating will need to be improved to at least 'E' rating before you can let the property
- Legal advice should be taken to verify fixtures/fittings, planning, alterations and/or lease details
- Appliances & services are untested, dimensions are approximate and floor plans are not to scale



13418977/20240111/JB/TT