



Price
£695,000

Freehold

4x  3x  2x 

**Fawkham Manor, Manor
Lane, Fawkham,
Longfield, Kent, DA3**



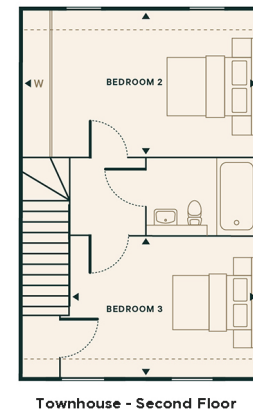
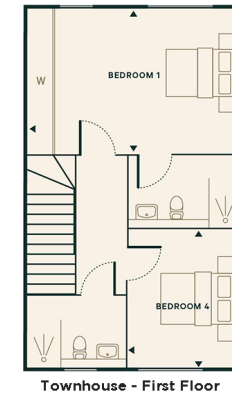
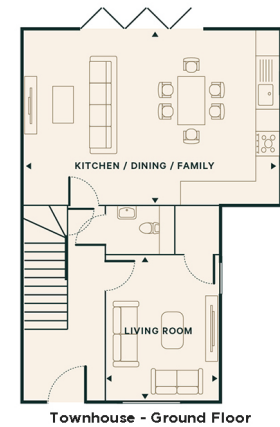
Video Tour available

Wards
Helping you move forwards



Main features

- Contemporary style kitchens with quartz worktops and integrated appliances
- Contemporary bathroom suites and chrome heated towel rails
- Underfloor heating to ground floor and radiators to upper floors
- Quality carpeting and herringbone flooring mixed throughout



Accommodation

GROUND FLOOR

Entrance Hall
 Lounge: 12'5 x 9'5 (3.79m x 2.87m)
 Kitchen/Dining/Family Room: 21'5 x 14'5 (6.53m x 4.40m)
 Cloakroom

FIRST FLOOR

Bedroom 1: 16'8 x 11'2 (5.08m x 3.41m)
 En-suite Shower Room
 Bedroom 4: 10'8 x 8'5 (3.25m x 2.57m)
 Shower Bathroom

SECOND FLOOR

Bedroom 2: 16'8 x 11'2 (5.08m x 3.41m)
 Bedroom 3: 14'1 x 10'9 (4.30m x 3.28m)
 Bathroom

OUTSIDE

Front Garden
 Rear Garden
 Allocated Parking

Call New Ash Green - 01474 872466 ■ wardsofkent.co.uk

- If buying to let, the energy rating will need to be improved to at least 'E' rating before you can let the property
- Legal advice should be taken to verify fixtures/fittings, planning, alterations and/or lease details
- Appliances & services are untested, dimensions are approximate and floor plans are not to scale



13418996/20230928/JB/TT