



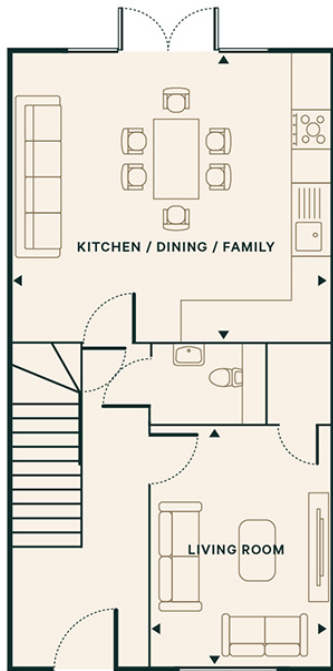
Price
£649,950

Freehold

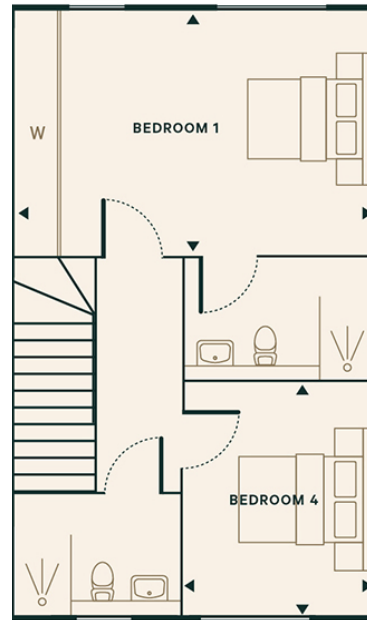
4x  3x  2x 

**Fawkham Manor, Manor
Lane, Fawkham,
Longfield, Kent, DA3**

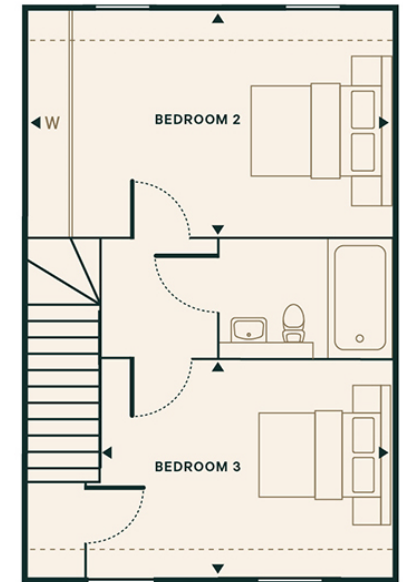
Wards
Helping you move forwards



Townhouse - Ground Floor



Townhouse - First Floor



Townhouse - Second Floor

Accommodation

GROUND FLOOR

Entry Hallway
 Lounge: 12'5 x 8'9 (3.79m x 2.67m)
 Cloakroom
 Kitchen/Dining/Family Room: 16'1 x 14'5 (4.91m x 4.40m)

FIRST FLOOR

Bedroom 1: 15'7 x 11'2 (4.75m x 3.41m)
 En-suite
 Bedroom 4: 10'8 x 7'9 (3.25m x 2.36m)
 Shower Room

SECOND FLOOR

Bedroom 2: 16'1 x 11'2 (4.91m x 3.41m)
 Bedroom 3: 13'5 x 10'8 (4.09m x 3.25m)
 Bathroom

OUTSIDE

Front Garden
 Rear Garden
 Allocated Parking



Main features

- Contemporary style kitchen with quartz worktops and integrated appliances
- Contemporary bathroom suites and chrome heated towel rails
- Underfloor heating to ground floor and radiators to upper floors
- Quality carpeting and herringbone flooring mixed throughout



Nearest Schools

Primary Schools: New Ash Green Primary 0.9 miles, Hartley Primary 1.0 miles, Our Lady of Hartley Catholic Primary 1.2 miles
Secondary Schools: Longfield Academy 1.8 miles, Helen Allison School 3.1 miles, Meopham School 3.1 miles



Transport Information

Train Stations: Meopham 3.3 miles, Sole Street 4.0 miles, Halling 6.9 miles



Address

Fawkham Manor, Manor Lane, Fawkham, Longfield, Kent, DA3



Directions

For directions to this property please contact us.



Wards
Helping you move forwards

Call New Ash Green Branch 01474 872466 ■ wardsofkent.co.uk



■ If buying to let, the energy rating will need to be improved to at least 'E' rating before you can let the property
■ Appliances & services are untested, dimensions are approximate and floor plans are not to scale

■ Legal advice should be taken to verify fixtures/fittings, planning, alterations and/or lease details

13419011/20230929/JB/TT