



**Price**

**£325,000**

**Freehold**

3x  1x  1x 

**Millfield, New Ash  
Green, Longfield, Kent,  
DA3**

**OVER 60?**

Secure this property  
for up to **59% less!**

*Wards*  
Helping you move forwards





## Main features

- End of terraced house in a peaceful location
- Garage en bloc
- Secluded garden with rear access
- Addition of garden room creating a versatile space
- Reconstructed layout providing more space across all bedroom

## Accommodation

### GROUND FLOOR

Entrance Hall

Lounge: 18'5 x 15'9 (5.62m x 4.80m)

Kitchen: 15'8 x 7'7 (4.78m x 2.31m)

Garden Room: 9'0 x 7'8 (2.75m x 2.34m)

Cloakroom: 6'3 x 5'10 (1.91m x 1.78m)

### FIRST FLOOR

Landing

Bathroom: 6'6 x 6'4 (1.98m x 1.93m)

Bedroom 1: 15'11 x 8'3 (4.85m x 2.52m)

Bedroom 2: 9'11 x 9'8 (3.02m x 2.95m)

Bedroom 3: 9'9 x 8'2 (2.97m x 2.49m)

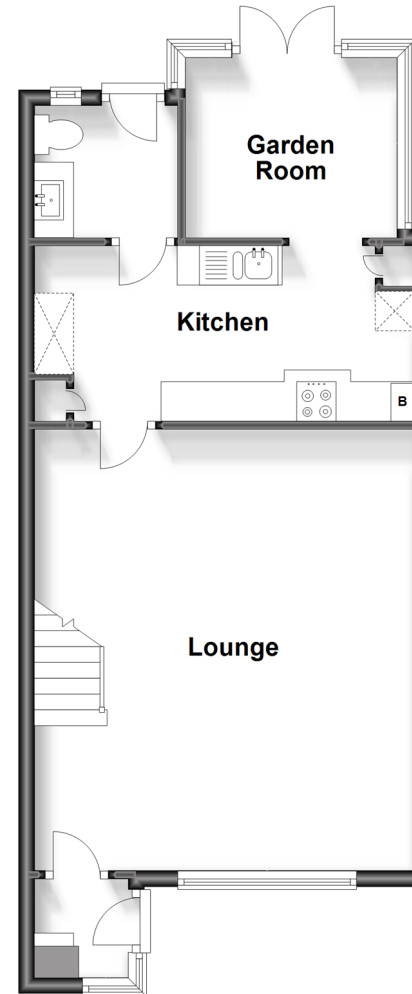
### OUTSIDE

Rear Garden

Garage en-bloc

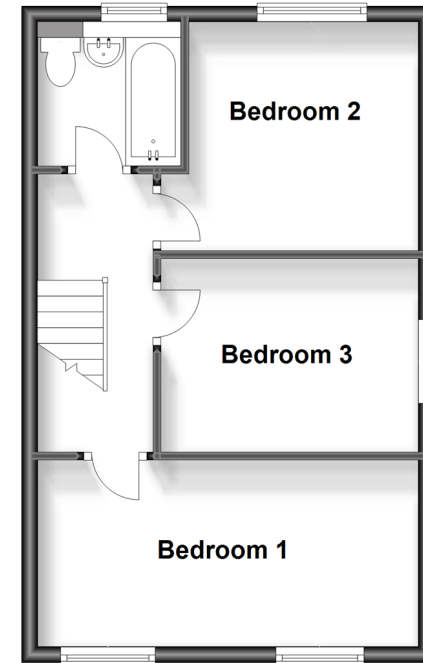
### Ground Floor

Approx. 49.7 sq. metres (535.0 sq. feet)



### First Floor

Approx. 38.3 sq. metres (412.0 sq. feet)



**Call New Ash Green - 01474 872466 ■ [wardsof Kent.co.uk](http://wardsof Kent.co.uk)**

- Legal advice should be taken to verify fixtures/fittings, planning, alterations and/or lease details
- Appliances & services are untested, dimensions are approximate and floor plans are not to scale
- Through a Homewise Home For Life Plan people aged 60+ can secure this property for up to 59% less, by purchasing a Lifetime Lease.



13419014/20240202/YE/CH