



Price

£650,000

Leasehold

2x  2x  1x 

Fawkham Manor, Manor Lane, Fawkham,
Longfield, Kent, DA3

Wards
Helping you move forwards



Main features

- Sympathetically converted and restored from a Grade II listed building
- Shaker style kitchens with quartz worktops and integrated appliances
- Fully tiled bathrooms and en-suites
- Video entry phone system and alarms
- 10 year Advantage structural warranty
- Many retained original features
- Allocated parking for 2 cars and communal electric vehicle charging points

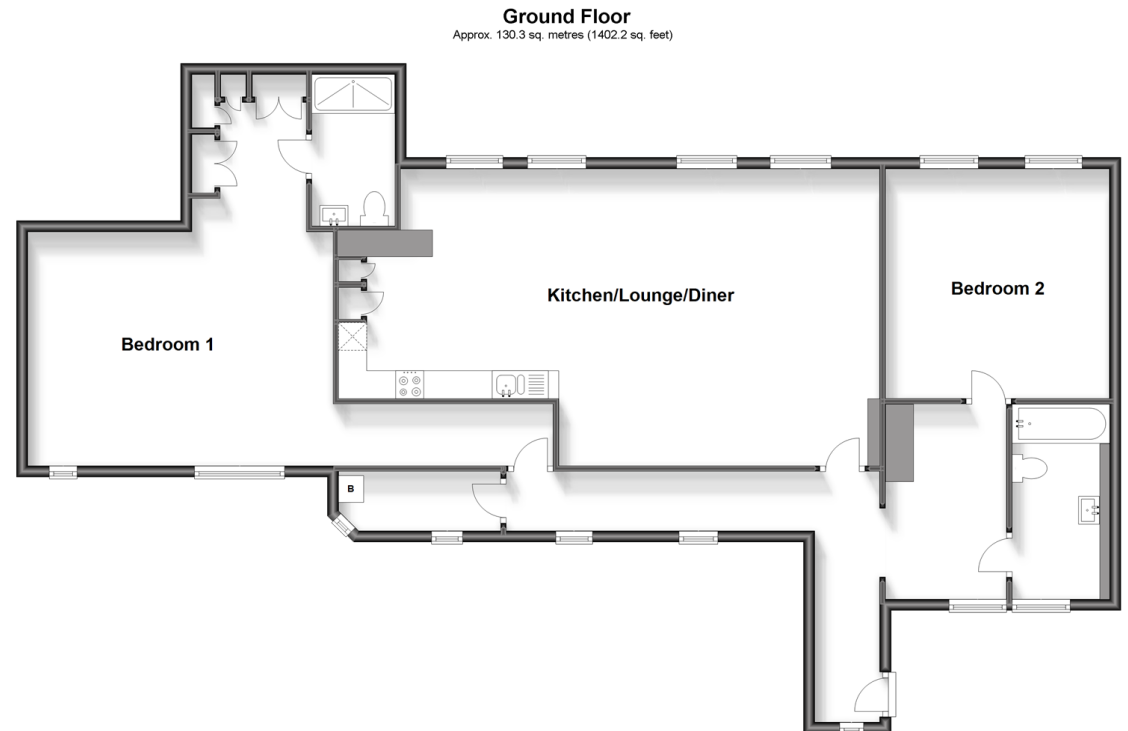
Accommodation

GROUND FLOOR

Entrance Hallway
 Kitchen/Lounge/Diner: 32'2 x 17'7 (9.81m x 5.36m)
 Bedroom 1: 21'5 x 17'7 (6.53m x 5.36m)
 En-suite Shower Room
 Bedroom 2: 13'6 x 13'0 (4.12m x 3.97m)
 Bathroom

OUTSIDE

Communal Garden
 Allocated Parking



Call New Ash Green - 01474 872466 ■ wardsofkent.co.uk

■ If buying to let, the energy rating will need to be improved to at least 'E' rating before you can let the property

■ Appliances & services are untested, dimensions are approximate and floor plans are not to scale

■ Legal advice should be taken to verify fixtures/fittings, planning, alterations and/or lease details



13419018/20240508/JB/TT