

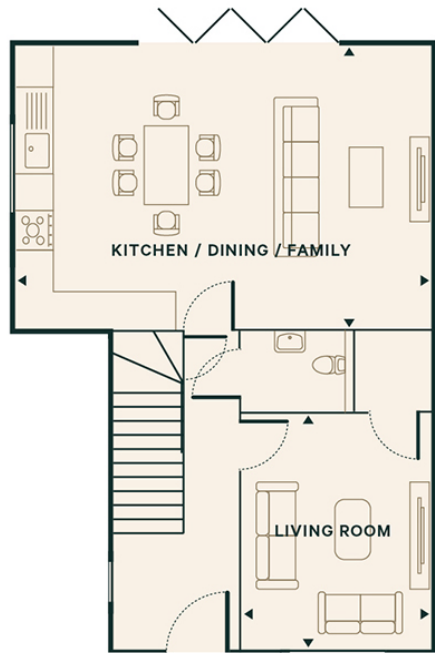


Price
£650,000
Freehold

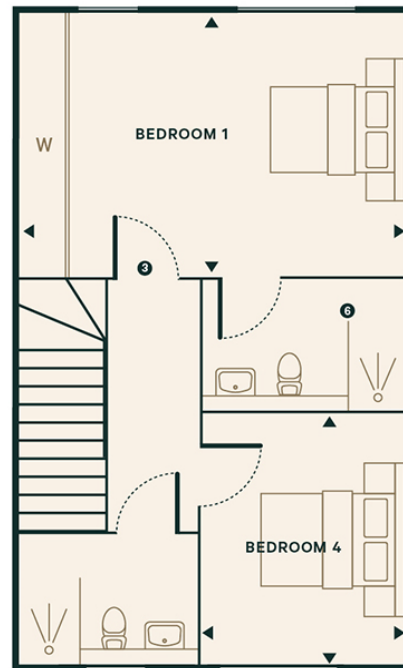
4x  2x  1x 

Fawkham Manor, Manor Lane, Fawkham,
Longfield, Kent, DA3

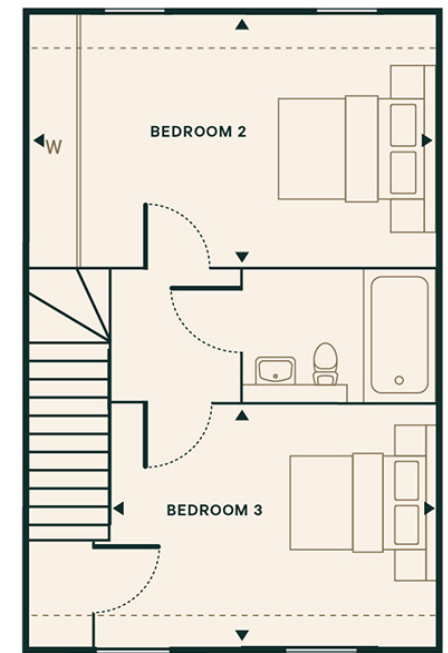
Wards
Helping you move forwards



Townhouse - Ground Floor



Townhouses - First Floor



Townhouses - Second Floor

Accommodation

GROUND FLOOR

Entrance Hall
 Lounge: 12'5 x 9'2 (3.79m x 2.80m)
 Kitchen Diner Family Room: 21'5 x 14'4 (6.53m x 4.37m)
 Cloakroom

FIRST FLOOR

Landing
 Bedroom 1: 16'4 x 11'2 (4.98m x 3.41m)
 En-suite Shower Room
 Bedroom 4: 11'2 x 8'2 (3.41m x 2.49m)
 Shower Room

SECOND FLOOR

Bedroom 2: 16'4 x 11'2 (4.98m x 3.41m)
 Bedroom 3: 14'0 x 11'2 (4.27m x 3.41m)
 Bathroom

OUTSIDE

Rear Garden
 Allocated Parking



Main features

- Contemporary style kitchens with quartz worktops and integrated appliances
- Contemporary bathroom suites and chrome heated towel rails
- Underfloor heating to ground floor and radiators to upper floors
- Quality carpeting and herringbone flooring mixed throughout



Nearest Schools

Primary Schools: New Ash Green Primary 0.9 miles, Hartley Primary 1.0 miles, Our Lady of Hartley Catholic Primary, Hartley, Longfield 1.2 miles

Secondary Schools: Longfield Academy 1.8 miles, Helen



Transport Information

Train Stations: Meopham 3.3 miles, Sole Street 4.0 miles, Halling 6.9 miles



Address

Fawkham Manor, Manor Lane, Fawkham, Longfield, Kent, DA3



Directions

For directions to this property please contact us.



Call New Ash Green Branch 01474 872466 ■ wardsofkent.co.uk



- If buying to let, the energy rating will need to be improved to at least 'E' rating before you can let the property
- Appliances & services are untested, dimensions are approximate and floor plans are not to scale

- Legal advice should be taken to verify fixtures/fittings, planning, alterations and/or lease details

13419038/20240131/YE/TT