



Price

£750,000

Freehold

4x  2x  2x 

**Billings Hill Shaw,
Hartley, Longfield, Kent,
DA3**

OVER 60?

Secure this property
for up to **59% less!**

Wards
Helping you move forwards



Main features

- Very popular road in the heart of Hartley
- Within walking distance to local amenities and excellent schools
- Large garage and driveway
- Picturesque secluded rear garden
- Versatile living space with extended open plan kitchen

Accommodation

GROUND FLOOR

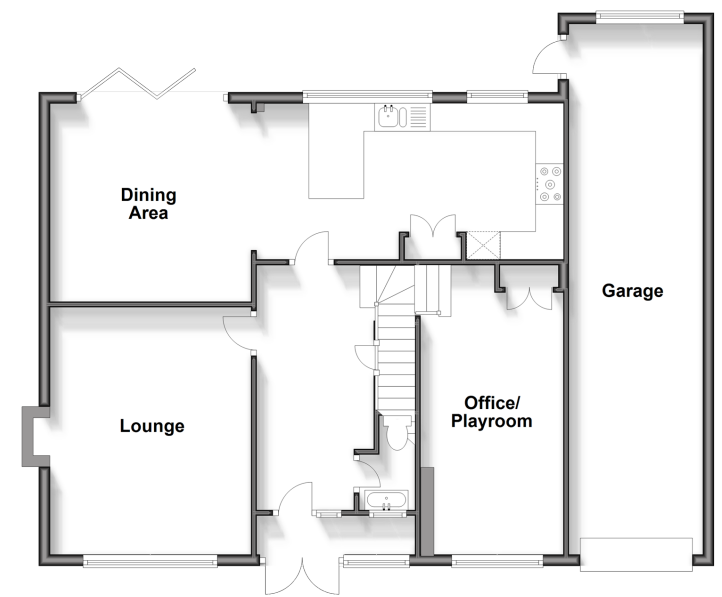
Entrance Porch
Hallway
Living Room: 12'0 x 11'0 (3.66m x 3.36m)
Kitchen: 16'11 x 9'0 (5.16m x 2.75m)
Dining Room: 11'0 x 10'0 (3.36m x 3.05m)
Office/Playroom: 16'2 x 8'2 (4.93m x 2.49m)

FIRST FLOOR

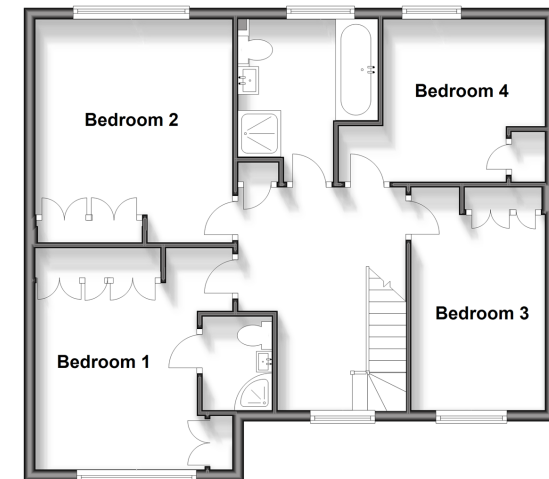
Landing
Bedroom 1: 14'0 x 11'7 (4.27m x 3.53m)
Ensuite Shower Room
Bedroom 2: 12'7 x 11'9 (3.84m x 3.58m)
Bedroom 3: 12'0 x 9'0 (3.66m x 2.75m)
Bedroom 4: 12'0 x 8'0 (3.66m x 2.44m)
Family bathroom

OUTSIDE

Large rear garden
Driveway
Double Garage



First Floor
Approx. 68.3 sq. metres (734.9 sq. feet)



Call New Ash Green - 01474 872466 ■ wardsof Kent.co.uk

- Legal advice should be taken to verify fixtures/fittings, planning, alterations and/or lease details
- Appliances & services are untested, dimensions are approximate and floor plans are not to scale
- Through a Homewise Home For Life Plan people aged 60+ can secure this property for up to 59% less, by purchasing a Lifetime Lease.



13419046/20240427/JH/JH