



Price
£165,000

Leasehold

2x  1x  1x 

**Victoria Street, New
Romney, Kent, TN28**

OVER 60?

Secure this property
for up to **59% less!**

Wards
Helping you move forwards



Main features

- Exceptional first floor apartment
- Garage and parking space
- No onward chain so a quick sale is available, long lease
- Central town location
- Bright and airy, modern accommodation to include new kitchen and bathroom

Accommodation

FIRST FLOOR

Entrance Hall

Lounge: 15'10 x 10'3 (4.83m x 3.13m)

Bedroom 1: 11'9 x 10'2 (3.58m x 3.10m)

Bedroom 2: 8'11 x 8'5 (2.72m x 2.57m)

Kitchen: 8'11 x 8'11 (2.72m x 2.72m)

Bathroom: 7'4 x 5'6 (2.24m x 1.68m)

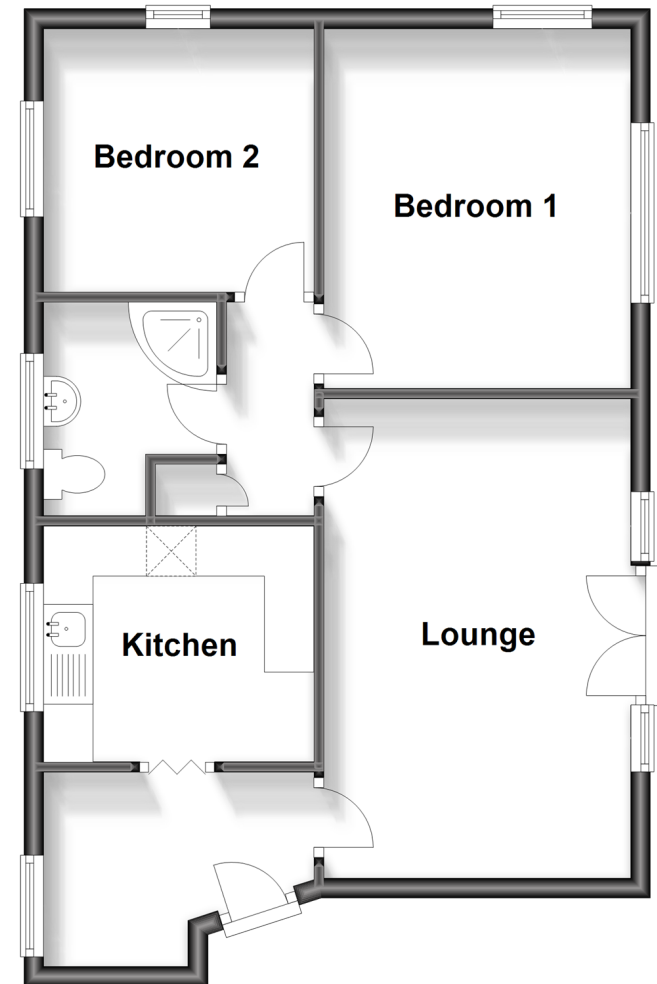
OUTSIDE

Parking Space

Garage

First Floor

Approx. 52.1 sq. metres (561.1 sq. feet)



Call New Romney - 01797 363745 ■ wardsofkent.co.uk

- Legal advice should be taken to verify fixtures/fittings, planning, alterations and/or lease details
- Appliances & services are untested, dimensions are approximate and floor plans are not to scale
- Through a Homewise Home For Life Plan people aged 60+ can secure this property for up to 59% less, by purchasing a Lifetime Lease.



13519978/20230708/SRH/CA