



**Guide Price**

**£285,000**

**Freehold**

3x  1x  2x 

**Vinlands, Lydd, Kent,  
TN29**

**OVER 60?**

Secure this property  
for up to **59% less!**

*Wards*  
Helping you move forwards





## Main features

- No onward chain
- Quiet residential mews
- Short walk to local amenities and shops
- Garage, shared driveway and parking space on front garden
- Landscaped garden which is low maintenance for ease

## Accommodation

### GROUND FLOOR

Entrance Porch  
 Entrance Hall  
 Lounge: 12'9 x 11'1 (3.89m x 3.38m)  
 Dining Area: 8'9 x 8'9 (2.67m x 2.67m)  
 Kitchen: 11'5 x 8'5 (3.48m x 2.57m)  
 Conservatory: 15'0 x 6'10 (4.58m x 2.08m)

### FIRST FLOOR

Landing  
 Bedroom 1: 13'7 x 8'5 (4.14m x 2.57m)  
 Bedroom 2: 8'0 x 7'11 (2.44m x 2.41m)  
 Bedroom 3: 10'5 x 5'9 (3.18m x 1.75m)  
 Bathroom

### OUTSIDE

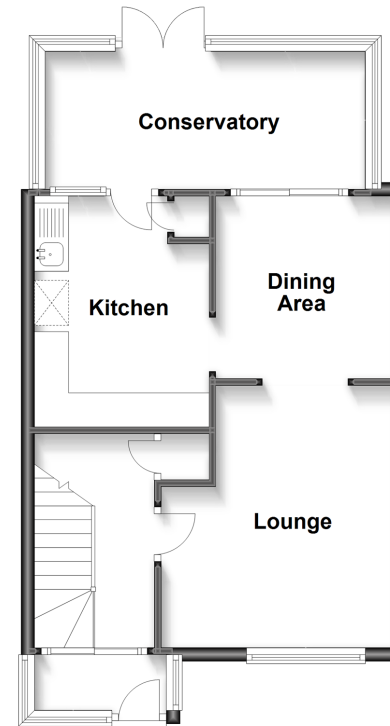
Shared Driveway  
 Single Garage  
 Gardens to Front and Rear  
 Parking Space

**Call New Romney - 01797 363745 ■ [wardsof Kent.co.uk](http://wardsof Kent.co.uk)**

- Legal advice should be taken to verify fixtures/fittings, planning, alterations and/or lease details
- Appliances & services are untested, dimensions are approximate and floor plans are not to scale
- Through a Homewise Home For Life Plan people aged 60+ can secure this property for up to 59% less, by purchasing a Lifetime Lease.

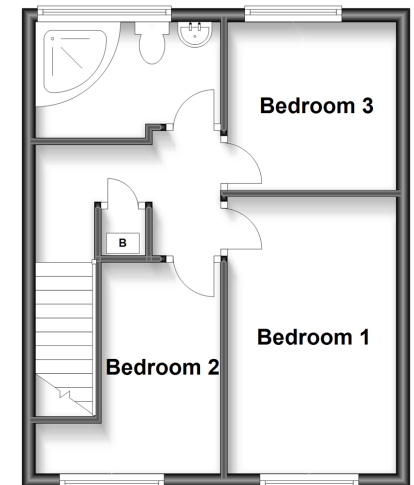
### Ground Floor

Approx. 46.8 sq. metres (503.6 sq. feet)



### First Floor

Approx. 35.1 sq. metres (377.4 sq. feet)



13521626/20230711/CA/CA