



**Price**  
**£280,000**

**Freehold**

3x  1x  1x 

**Dunkirk Close,  
Dymchurch, Kent, TN29**

**OVER 60?**

Secure this property  
for up to **59% less!**

*Wards*  
Helping you move forwards





## Main features

- Spacious modern home in a quiet tucked away location
- Secluded rear garden
- Large family kitchen/diner perfect for entertaining
- Stylish decoration throughout
- Close to shops, amenities and sandy beach

## Accommodation

### GROUND FLOOR

Porch  
Entrance Hall  
Kitchen/Diner: 22'4 x 10'8 (6.81m x 3.25m)  
Lounge: 14'4 x 10'5 (4.37m x 3.18m)

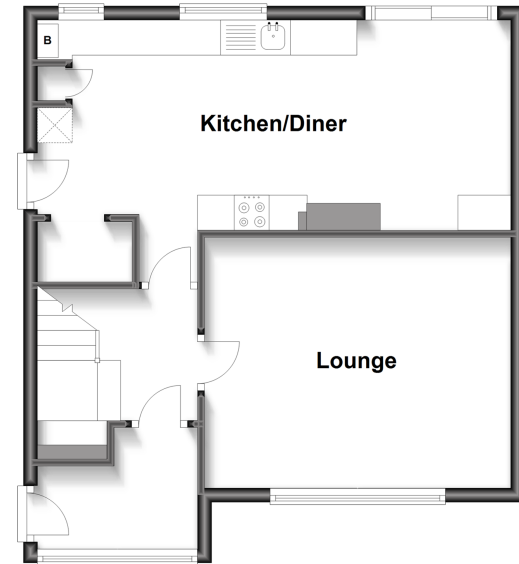
### FIRST FLOOR

Landing  
Bedroom 1: 13'0 x 10'9 (3.97m x 3.28m)  
Bedroom 2: 10'5 x 9'9 (3.18m x 2.97m)  
Bedroom 3: 10'1 (3.08m) x 8'9 (2.67m) narrowing to 5'6 (1.68m)  
Bathroom  
Separate Toilet

### OUTSIDE

Front & Rear Gardens

**Ground Floor**  
Approx. 47.3 sq. metres (509.1 sq. feet)



**First Floor**  
Approx. 44.9 sq. metres (483.6 sq. feet)



**Call New Romney - 01797 363745 ■ [wardsof Kent.co.uk](http://wardsof Kent.co.uk)**

- Legal advice should be taken to verify fixtures/fittings, planning, alterations and/or lease details
- Appliances & services are untested, dimensions are approximate and floor plans are not to scale
- Through a Homewise Home For Life Plan people aged 60+ can secure this property for up to 59% less, by purchasing a Lifetime Lease.



13521686/20240221/AH/CA