



Price

£250,000

Freehold

2x  1x  1x 

**The Derings, Lydd, Kent,
TN29**

Wards
Helping you move forwards



Main features

- Truly exceptional cottage style home, much improved throughout
- Good sized landscaped rear garden
- Walk-in wardrobe to bedroom 1
- Extended open plan kitchen and dining area
- Shared driveway to the front

Accommodation

GROUND FLOOR

Entrance Hall

Lounge: 18'8 x 10'3 (5.69m x 3.13m)

Kitchen: 11'1 x 7'4 (3.38m x 2.24m)

Dining Area: 9'0 x 8'7 (2.75m x 2.62m)

FIRST FLOOR

Landing

Bedroom 1: 10'7 x 10'0 (3.23m x 3.05m)

Bedroom 2: 10'9 x 8'8 (3.28m x 2.64m)

Bathroom

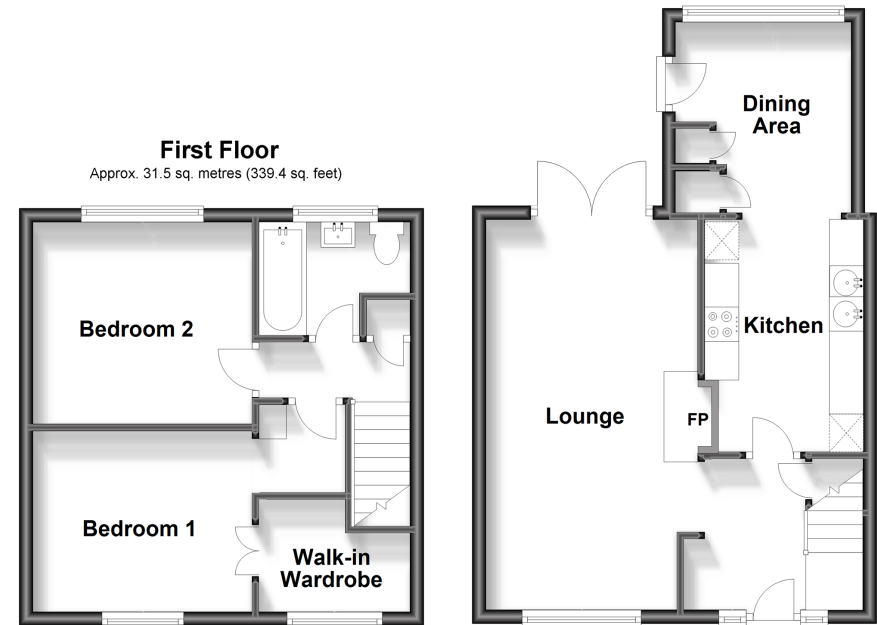
OUTSIDE

Shared Driveway

Front & Rear Gardens

Ground Floor

Approx. 38.9 sq. metres (419.1 sq. feet)



Call New Romney - 01797 363745 ■ wardsforkent.co.uk

- Legal advice should be taken to verify fixtures/fittings, planning, alterations and/or lease details
- Appliances & services are untested, dimensions are approximate and floor plans are not to scale



13521940/20230814/MEL/CA