



**Price**  
**£425,000**

**Freehold**

3x  2x  2x 

**Taylor Road,  
Lydd-On-Sea, Kent,  
TN29**

*Wards*  
Helping you move forwards





## Main features

- Beautifully presented home just off the seafront, landscaped mature rear garden and conservatory to enjoy it from all year round
- Handy for those strolls along the shoreline
- Separate lounge and dining room for added flexibility
- Off road parking for cars, caravan and boat
- Short drive to New Romney town centre with its many shops and amenities

## Accommodation

### GROUND FLOOR

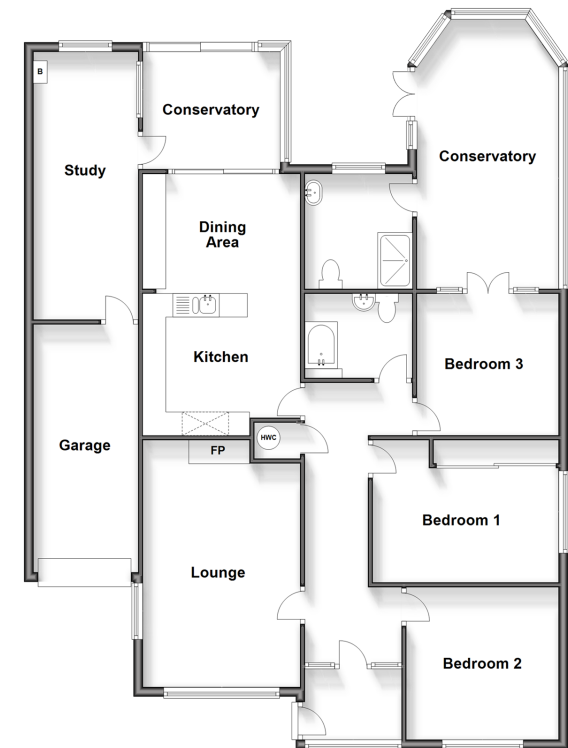
Porch  
 Entrance Hall  
 Lounge: 15'9 x 11'7 (4.80m x 3.53m)  
 Bedroom 2: 10'8 x 10'6 (3.25m x 3.20m)  
 Bedroom 1: 13'3 x 9'9 (4.04m x 2.97m)  
 Bedroom 3: 10'4 x 9'9 (3.15m x 2.97m)  
 Conservatory: 18'8 x 10'1 (5.69m x 3.08m)  
 Bathroom  
 Kitchen: 19'8 x 11'2 (6.00m x 3.41m)  
 Dining Area: 18'3 x 7'6 (5.57m x 2.29m)  
 Shower Room  
 Conservatory  
 Study

### OUTSIDE

Off Road Parking  
 Garage  
 Rear Garden

### Ground Floor

Approx. 147.3 sq. metres (1585.8 sq. feet)



Call New Romney - 01797 363745 ■ [wardsofkent.co.uk](http://wardsofkent.co.uk)

■ Legal advice should be taken to verify fixtures/fittings, planning, alterations and/or lease details

■ Appliances & services are untested, dimensions are approximate and floor plans are not to scale



13522163/20240409/CA/CA