



Price
£325,000

Freehold

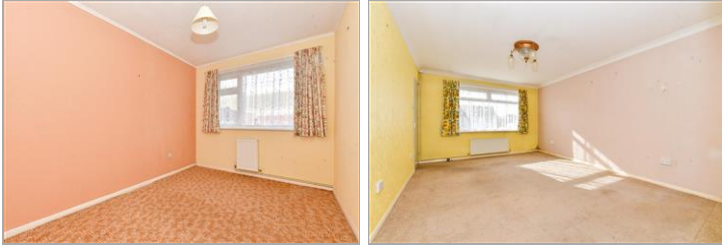
3x  1x  1x 

**St. Mary's Gardens,
Dymchurch, Kent, TN29**

OVER 60?

Secure this property
for up to **59% less!**

Wards
Helping you move forwards



Main features

- Quiet tucked away location
- No onward chain
- Secluded mature manageable rear garden
- Bright and airy accommodation
- Short drive to Dymchurch centre where you will find many shops and amenities

Accommodation

GROUND FLOOR

Porch: 7'0 x 4'3 (2.14m x 1.30m)
 Entrance Hall
 Lounge: 17'6 x 11'9 (5.34m x 3.58m)
 Shower Room
 Kitchen: 10'9 x 9'9 (3.28m x 2.97m)
 Side Porch
 Inner Hallway
 Bedroom 1: 12'8 x 8'3 (3.86m x 2.52m)
 Bedroom 2: 12'5 x 7'9 (3.79m x 2.36m)
 Bedroom 3: 8'9 x 6'3 (2.67m x 1.91m)

OUTSIDE

Off Road Parking
 Garage
 Front & Rear Gardens

Ground Floor
 Approx. 92.0 sq. metres (989.9 sq. feet)



Call New Romney - 01797 363745 ■ wardsof Kent.co.uk

- Legal advice should be taken to verify fixtures/fittings, planning, alterations and/or lease details
- Appliances & services are untested, dimensions are approximate and floor plans are not to scale
- Through a Homewise Home For Life Plan people aged 60+ can secure this property for up to 59% less, by purchasing a Lifetime Lease.



13522772/20240316/AH/CA