



Price
£240,000

Freehold

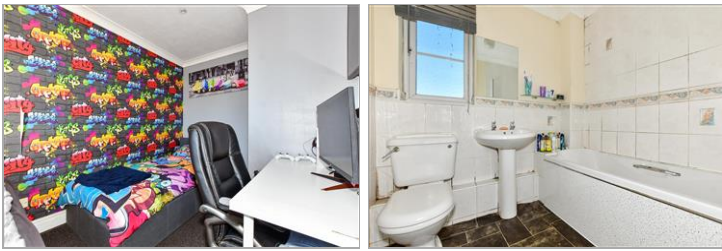
2x  1x  1x 

**Oakham Drive, Lydd,
Romney Marsh, Kent,
TN29**

OVER 60?

Secure this property
for up to **59% less!**

Wards
Helping you move forwards



Main features

- Quiet cul-de-sac location on the outskirts of the town centre
- Opportunity for investment to buy with tenant in-situ
- Short drive to local beach
- Close to local primary school and short drive to secondary school
- Countryside walks nearby

Accommodation

GROUND FLOOR

Entrance Hall

Kitchen: 8'9 x 7'8 (2.67m x 2.34m)

Cloakroom

Lounge: 15'0 x 13'4 (4.58m x 4.07m)

FIRST FLOOR

Landing

Bedroom 1: 15'2 x 5'2 (4.63m x 1.58m) plus 7'8 x 6'9 (2.34m x 2.06m)

Bedroom 2: 10'0 x 7'9 (3.05m x 2.36m)

Bathroom

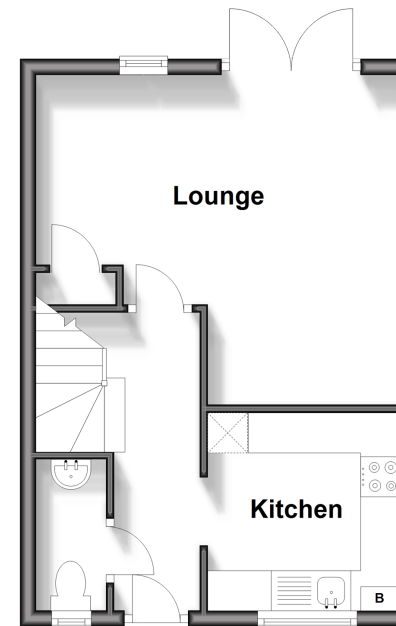
OUTSIDE

Front & Rear Gardens

Off Road Parking

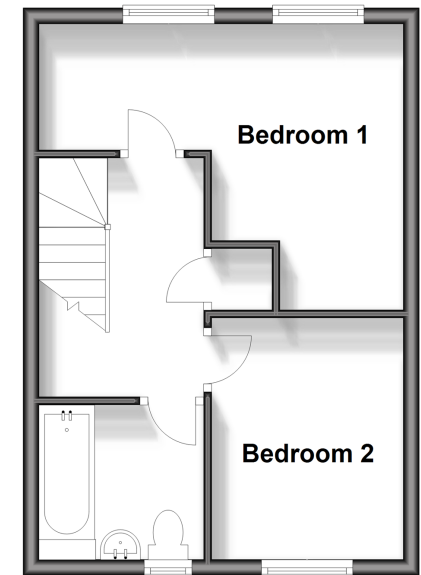
Ground Floor

Approx. 30.6 sq. metres (329.8 sq. feet)



First Floor

Approx. 30.6 sq. metres (329.8 sq. feet)



Call New Romney - 01797 363745 ■ wardsof Kent.co.uk

- Legal advice should be taken to verify fixtures/fittings, planning, alterations and/or lease details
- Appliances & services are untested, dimensions are approximate and floor plans are not to scale
- Through a Homewise Home For Life Plan people aged 60+ can secure this property for up to 59% less, by purchasing a Lifetime Lease.



13523300/20240301/KMC/CA