



Guide Price
£270,000

Freehold

3x  2x  1x 

**Salthouse Close,
Brookland, Romney
Marsh, Kent, TN29**

OVER 60?

Secure this property
for up to **59% less!**

Wards
Helping you move forwards



Main features

- Spacious modern home
- Quiet semi-rural mews location
- Many internal and external improvements
- Stylish high-end kitchen
- Bedroom 1 with dressing room and en-suite shower room

Accommodation

GROUND FLOOR

Porch
 Entrance Hall
 Kitchen/Breakfast Room: 13'6 x 10'6 (4.12m x 3.20m)
 Lounge/Diner: 19'6 x 17'5 (5.95m x 5.31m)
 Cloakroom

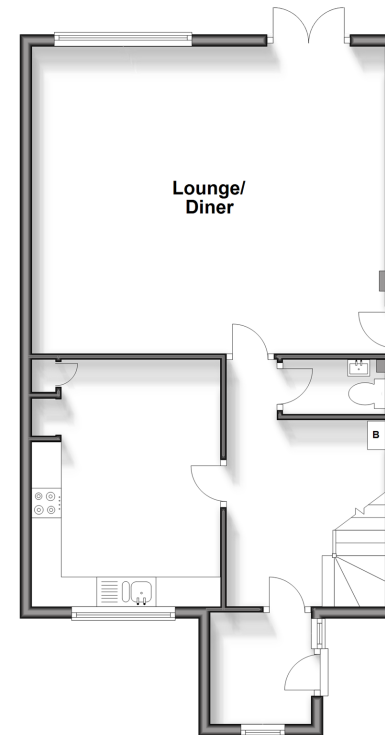
FIRST FLOOR

Landing
 Bedroom 1: 13'7 x 10'6 (4.14m x 3.20m)
 Dressing Room: 6'3 x 4'5 (1.91m x 1.35m)
 En-Suite Shower Room
 Bedroom 2: 12'7 x 9'4 (3.84m x 2.85m)
 Bedroom 3: 9'8 x 9'6 (2.95m x 2.90m)
 Bathroom

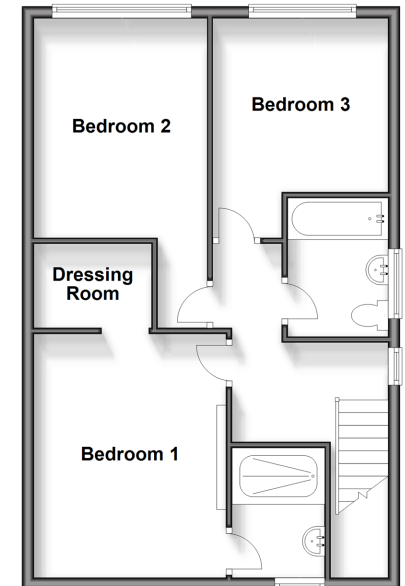
OUTSIDE

Off Road Parking
 Front & Rear Gardens

Ground Floor
 Approx. 59.7 sq. metres (642.9 sq. feet)



First Floor
 Approx. 56.4 sq. metres (606.6 sq. feet)



Call New Romney - 01797 363745 ■ wardsof Kent.co.uk

- Legal advice should be taken to verify fixtures/fittings, planning, alterations and/or lease details
- Appliances & services are untested, dimensions are approximate and floor plans are not to scale
- Through a Homewise Home For Life Plan people aged 60+ can secure this property for up to 59% less, by purchasing a Lifetime Lease.



13523900/20240323/AH/CA