



**OVER 60?**

Secure this property  
for up to **59% less!**

**Price**

**£485,000**

**Freehold**

4x  2x  1x 

**Marsh View Close, New  
Romney, Kent, TN28**

*Wards*  
Helping you move forwards





## Main features

- Executive family home in a quiet mews
- Generous but manageable gardens
- Stylish modern decoration throughout
- High-end kitchen and dining area ideal for entertaining
- Walking distance to the town centre

## Accommodation

### GROUND FLOOR

Entrance Hall

Dining Area: 10'11 x 9'5 (3.33m x 2.87m)

Kitchen: 16'5 x 13'8 (5.01m x 4.17m)

Lounge: 18'8 x 9'6 (5.69m x 2.90m)

Cloakroom

### FIRST FLOOR

Landing

Bedroom 1: 15'6 x 8'8 (4.73m x 2.64m)

En-Suite Shower Room

Bedroom 2: 13'3 x 8'9 (4.04m x 2.67m)

Bedroom 3: 9'8 x 9'6 (2.95m x 2.90m)

Bedroom 4: 9'1 x 6'3 (2.77m x 1.91m)

Bathroom

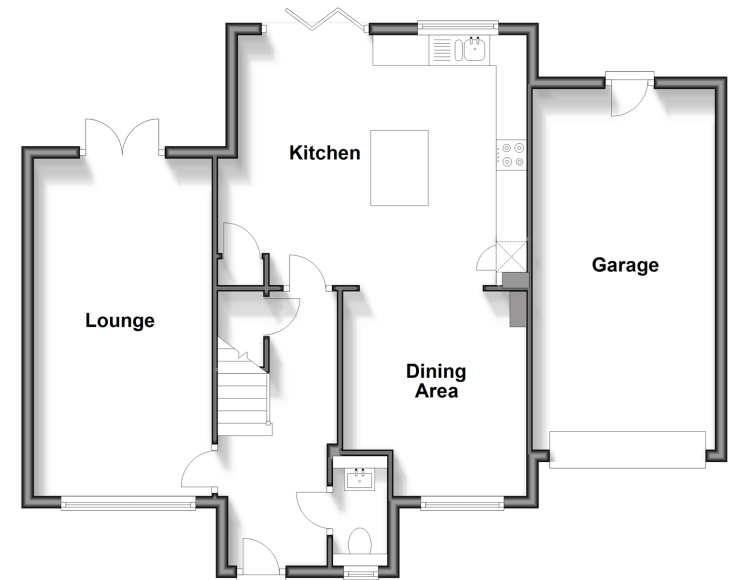
### OUTSIDE

Off Road Parking

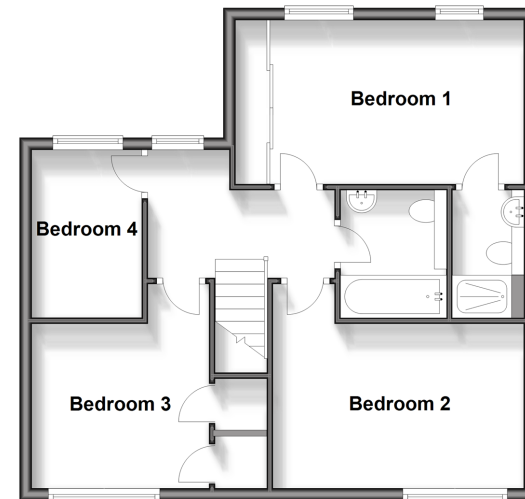
Garage

Front & Rear Gardens

**Ground Floor**  
Approx. 76.1 sq. metres (818.7 sq. feet)



**First Floor**  
Approx. 55.3 sq. metres (595.0 sq. feet)



**Call New Romney - 01797 363745 ■ [wardsof Kent.co.uk](http://wardsof Kent.co.uk)**

- Legal advice should be taken to verify fixtures/fittings, planning, alterations and/or lease details
- Appliances & services are untested, dimensions are approximate and floor plans are not to scale
- Through a Homewise Home For Life Plan people aged 60+ can secure this property for up to 59% less, by purchasing a Lifetime Lease.



13524121/20240119/AH/CA