



Guide Price
£240,000

Leasehold

1x  1x  1x 

**Marine Parade,
Littlestone, New
Romney, Kent, TN28**

OVER 60?

Secure this property
for up to **59% less!**



Virtual Reality Tour available

Wards
Helping you move forwards



Main features

- Exceptional lower ground floor apartment
- Large rooms and accommodation
- Landscaped private rear garden
- No onward chain
- Close to the beach and local shops
- Enjoy walks along this fabulous stretch of the English coast

Accommodation

LOWER-GROUND FLOOR

Entrance Hall

Lounge: 15'5 x 14'5 (4.70m x 4.40m)

Inner Hallway

Bedroom: 15'7 x 11'7 (4.75m x 3.53m)

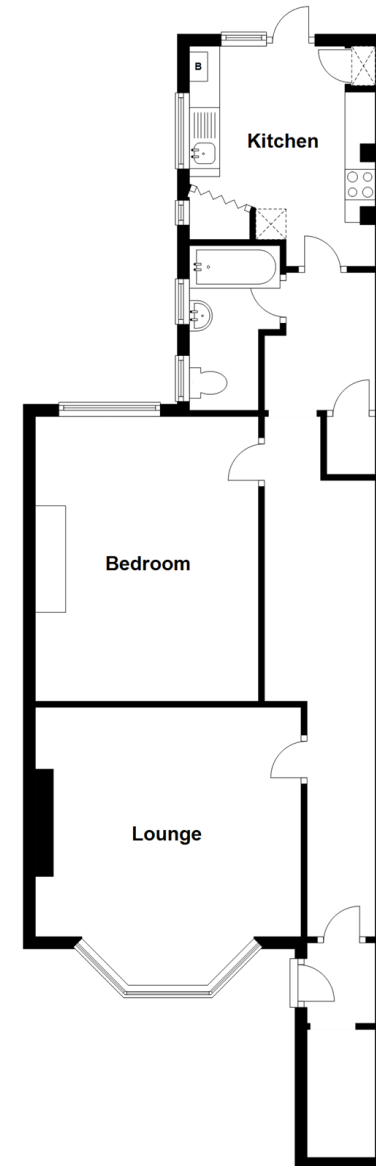
Bathroom

Kitchen: 10'6 x 9'9 (3.20m x 2.97m)

OUTSIDE

Rear Garden

Lower Ground Floor
Approx. 71.1 sq. metres (765.6 sq. feet)



Call New Romney - 01797 363745 ■ wardsof Kent.co.uk

- Legal advice should be taken to verify fixtures/fittings, planning, alterations and/or lease details
- Appliances & services are untested, dimensions are approximate and floor plans are not to scale
- Through a Homewise Home For Life Plan people aged 60+ can secure this property for up to 59% less, by purchasing a Lifetime Lease.



13524296/20220916/CA/CA