

**OVER 60?**

Secure this property  
for up to **59% less!**



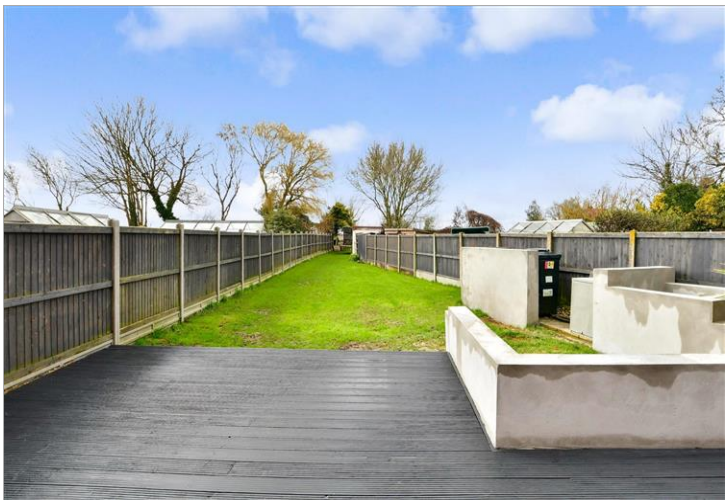
**Price**  
**£475,000**  
**Freehold**

3x  1x  1x 

Elm Fields, Old Romney, Romney Marsh,  
Kent, TN29

*Wards*  
Helping you move forwards





## Main features

- Exceptional much improved family home
- Quiet semi rural location
- Large landscaped rear garden
- Hard standing to the front
- Abutting open fields to the rear, countryside walks on your doorstep

## Accommodation

### GROUND FLOOR

Entrance Hall

Lounge: 25'9 maximum x 12'8 (7.85m x 3.86m)

Kitchen: 23'6 x 19'0 (7.17m x 5.80m)

Utility (Irregular Shape): 12'7 maximum x 8'3 maximum (3.84m x 2.52m)

Cloakroom

### FIRST FLOOR

Landing

Bedroom 1: 15'3 x 8'10 (4.65m x 2.69m)

Bedroom 2: 12'10 x 9'10 (3.91m x 3.00m)

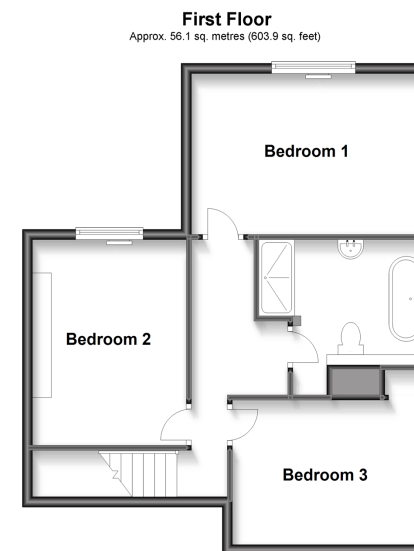
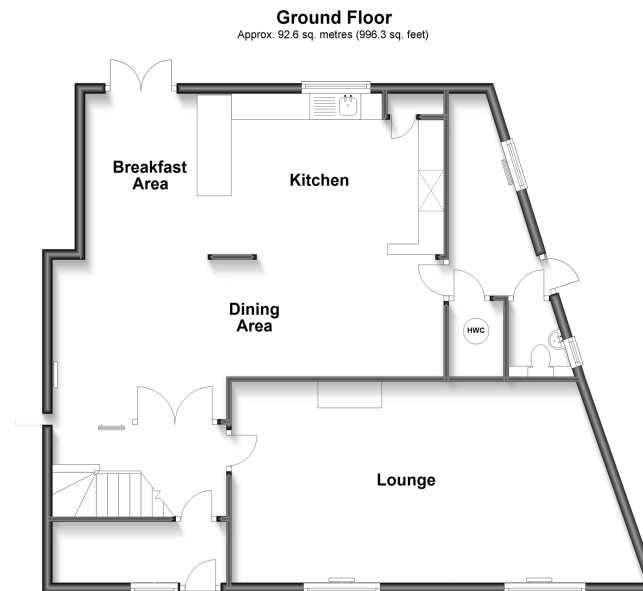
Bedroom 3: 11'10 x 9'1 (3.61m x 2.77m)

Bathroom

### OUTSIDE

Front & Rear Gardens

Hard Standing



**Call New Romney - 01797 363745 ■ [wardsof Kent.co.uk](http://wardsof Kent.co.uk)**

- Legal advice should be taken to verify fixtures/fittings, planning, alterations and/or lease details
- Appliances & services are untested, dimensions are approximate and floor plans are not to scale
- Through a Homewise Home For Life Plan people aged 60+ can secure this property for up to 59% less, by purchasing a Lifetime Lease.



13524340/20230227/AH/CA